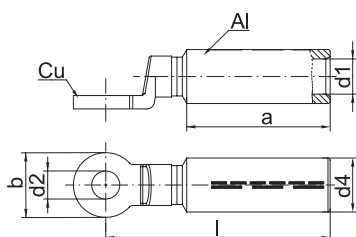




### Compression cable lugs, Al/Cu



- ▶ For non-tension connections of aluminium conductors to DIN EN 60228 and aluminium open wires to DIN EN 50182 and pre-rounded sector shaped conductors
- ▶ Tube dimension to DIN 46329
- ▶ With code number for clear tool assignment
- ▶ Filled with contact grease for optimum crimp results

#### Characteristics

- For connecting non-tensioned aluminium conductors to copper connections in humid environments and outdoors
- Barrier design with oil stop and solid copper palm
- Internal chamfer for simple cable insertion

#### Material

- E-aluminium
- Copper (EN13600)

#### Surface

- Bright

#### Technical instructions

- Tool: see page 115

#### Additional information

- re = round single solid wire, rm = round multi-stranded, se = sector shaped single solid wire, sm = sector shaped multi-stranded, sector shaped conductors must be pre-rounded

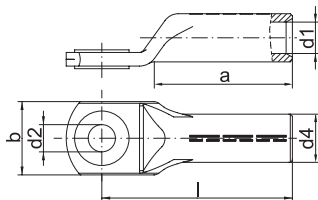
Size of bolt dia.	Part No.	Nominal cross section mm <sup>2</sup>		Code	Dimension mm						Number of crimps		Weight 100 St. ~kg Cu	Weight 100 St. ~kg total	Packing unit/pcs
		re/se	re/se		a	b	d1	d2	d4	l	Al (7 mm)	Al (wide)			
M 8	363R8	16	25	12	30	24	6.0	8.5	12	68	4	2	4.4	5.9	10
M 10	363R10	16	25	12	30	24	6.0	10.5	12	68	4	2	4.2	5.7	10
M 8	364R8	25	35	12	30	24	6.8	8.5	12	68	4	2	4.4	5.8	10
M 10	364R10	25	35	12	30	24	6.8	10.5	12	68	4	2	4.2	5.6	10
M 12	364R12	25	35	12	30	24	6.8	13.0	12	68	4	2	3.9	5.3	10
M 8	365R8	35	50	14	42	24	8.0	8.5	14	77	5	2	4.4	6.3	10
M 10	365R10	35	50	14	42	24	8.0	10.5	14	77	5	2	4.2	6.1	10
M 12	365R12	35	50	14	42	24	8.0	13.0	14	77	5	2	3.8	5.8	10
M 8	366R8	50	70	16	42	25	9.8	8.5	16	77	5	2	4.4	6.4	10
M 10	366R10	50	70	16	42	25	9.8	10.5	16	77	5	2	4.2	6.2	10
M 12	366R12	50	70	16	42	25	9.8	13.0	16	77	5	2	3.9	5.9	10
M 10	367R10	70	95	18	52	25	11.2	10.5	18.5	84.5	6	3	4.2	7.4	10
M 12	367R12	70	95	18	52	25	11.2	13.0	18.5	84.5	6	3	3.9	7.1	10
M 10	368R10	95	120	22	56	30	13.2	10.5	22	90.5	6	3	7.4	11.4	10
M 12	368R12	95	120	22	56	30	13.2	13.0	22	90.5	6	3	6.8	10.8	10
M 16	368R16	95	120	22	56	30	13.2	17.0	22	90.5	6	3	6.4	10.4	10
M 12	369R12	120	150	22	56	30	14.7	13.0	23	92.0	6	3	6.8	11.4	5
M 16	369R16	120	150	22	56	30	14.7	17.0	23	92.0	6	3	6.4	10.8	5
M 12	370R12	150	185	25	60	30	16.3	13.0	25	104.0	6	3	6.8	13.1	5
M 16	370R16	150	185	25	60	30	16.3	17.0	25	104.0	6	3	6.4	12.7	5
M 20	370R20	150	185	25	60	35	16.3	21.0	25	107.5	6	3	10.1	16.4	5
M 10	371R10	185	240	28	60	30	18.3	10.5	28.5	105.0	6	3	10.3	18.6	5
M 12	371R12	185	240	28	60	35	18.3	13.0	28.5	105.0	6	3	10.1	18.4	5
M 16	371R16	185	240	28	60	35	18.3	17.0	28.5	105.0	6	3	9.3	17.6	5

see next page

## Compression cable lugs, Al/Cu

Size of bolt dia.	Part No.	Nominal cross section mm <sup>2</sup>		Code	Dimension mm						Number of crimps		Weight 100 St. ~kg Cu	Weight 100 St. ~kg total	Packing unit/pcs
		rm/sm	re/se		a	b	d1	d2	d4	l	Al (7 mm)	Al (wide)			
M 20	<b>371R20</b>	185	240	28	60	35	18.3	21.0	28.5	107.5	6	3	10.1	18.4	5
M 10	<b>372R10</b>	240	300	32	70	35	21.0	10.5	32	118.5	8	3	12.1	22.5	5
M 12	<b>372R12</b>	240	300	32	70	35	21.0	13.0	32	118.5	8	3	11.8	22.2	5
M 16	<b>372R16</b>	240	300	32	70	35	21.0	17.0	32	118.5	8	3	11.0	21.4	5
M 20	<b>372R20</b>	240	300	32	70	35	21.0	21.0	32	118.5	8	3	10.1	20.5	5
M 12	<b>373R12</b>	300	--	34	70	36	23.3	13.0	34	123.5	8	3	17.7	33.7	2
M 16	<b>373R16</b>	300	--	34	70	36	23.3	17.0	34	123.5	8	3	16.9	32.9	2
M 20	<b>373R20</b>	300	--	34	70	40	23.3	21.0	34	123.5	8	3	16.0	32.0	1
M 12	<b>374R12</b>	400	--	38	73	40	26.0	13.0	38.5	150.5	--	4	25.6	37.4	1

## Compression cable lugs, Al/Cu with Cu eye



- ▶ For non-tension connections of aluminium conductors to DIN EN 60228 and aluminium cables to DIN EN 50182
- ▶ Tube dimension to DIN 46329
- ▶ For pre-rounded sector shaped conductors
- ▶ Unique tool assignment due to coding
- ▶ Filled with contact grease for optimum crimp characteristics

### Characteristics

- For connecting non-tension aluminium connections using Cu-washers in humid areas
- With Cu eyelet in screw-on area
- Easy to process due to crimp markings
- Simple cable entry due to internal chamfer

### Material

- E-aluminium
- Copper (EN13600)

### Surface

- Bright

### Technical instructions

- Tool: see page 115

### Additional information

- re = round single solid wire, rm = round multi-stranded, se = sector shaped single solid wire, sm = sector shaped multi-stranded, sector shaped conductors must be pre-rounded

Size of bolt dia.	Part No.	Nominal cross section mm <sup>2</sup>		Code	Dimension mm						Number of crimps		Weight 100 St. ~kg Cu	Weight 100 St. ~kg total	Packing unit/pcs
		rm/sm	re/se		a	b	d1	d2	d4	l	Al (7 mm)	Al (wide)			
M 6	<b>302R6</b>	10	16	10	32	18	5,0	6,5	10	52	4	2	0,260	1,20	10
M 8	<b>302R8</b>	10	16	10	32	22	5,0	8,5	10	52	4	2	0,580	1,50	10
	<b>303R8</b>	16	25	12	32	22	5,8	8,5	12	52	4	2	0,600	1,95	10
M 10	<b>303R10</b>	16	25	12	32	25	5,8	10,5	12	52	4	2	0,600	2,00	10
M 8	<b>304R8</b>	25	35	12	38	22	6,8	8,5	12	60	4	2	0,625	2,00	10
	<b>304R10</b>	25	35	12	38	25	6,8	10,5	12	60	4	2	0,900	2,10	10
M 10	<b>305R10</b>	35	50	14	42	26	8,0	10,5	14	67	5	2	0,800	3,00	10
	<b>305R12</b>	35	50	14	42	30	8,0	13,0	14	67	5	2	1,120	3,10	10
M 10	<b>306R10</b>	50	70	16	45	27	9,8	10,5	16	72	5	2	0,900	3,60	10
M 12	<b>306R12</b>	50	70	16	45	30	9,8	13,0	16	72	5	2	1,120	3,80	10
M 10	<b>307R10</b>	70	95	18	55	29	11,2	10,5	18,5	86	6	3	1,075	5,60	10

see next page