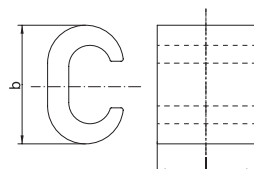




Branch clamps in C-type, Cu



- ▶ For non-tension copper cables, e.g. to DIN 48201-1
- ▶ Ideal for clamping identical conductor cross-sections e.g. to VDE 60228 Cl. 1 and 2
- ▶ No need to cut the main conductor

Material

- Copper (ETP)

Surface

- Tin-plated to protect against corrosion

Technical instructions

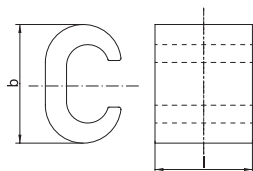
- Optimum conducting characteristics in combination with compound
- Tool: see page 133

Additional information

- Part Number appendix for bright version „BK“
- rm = round multi-stranded; re = round single solid
- * = Also suitable for 25 mm² round solid

Part No.	Hint	Cross section main conductor mm ² rm/re		Hint	Dimension mm		Weight/pcs. ~kg	Packing unit/pcs
		Main conductor	Tab conductor		b	l		
CK16		16/25	16/25		16.0	15	0.94	25
CK25	*	25/35	25/35	*	20.0	16	1.68	25
CK35		35/50	35/50		25.7	22	3.42	25
CK50		50/-	50/-		28.0	23	4.88	25
CK70		70/-	70/-		34.0	28	9.69	10
CK95		95/-	95/-		35.0	28	7.30	10

Branch clamps in C-type, Cu, multi-purpose clamps



- ▶ For non-tension copper cables, e.g. to DIN 48201-1
- ▶ Ideal for clamping non-identical conductor cross-sections e.g. to VDE 60228 Cl. 1 and 2
- ▶ No need to cut the main conductor

Material

- Copper (ETP)

Surface

- Tin-plated to protect against corrosion

Technical instructions

- Optimum conducting characteristics in combination with compound
- Tool: see page 133

Additional information

- Part Number appendix for bright version „BK“
- rm = round multi-stranded; re = round single solid

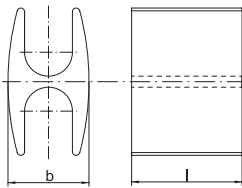
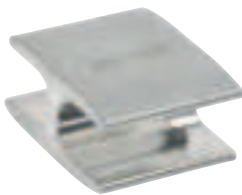
Part No.	Cross section main conductor mm ² rm/re		Dimension mm		Weight/pcs. ~kg	Packing unit/pcs
	Main conductor	Tab conductor	b	l		
MCK1010	6 - 10/10	4 - 6/4 - 10	12.0	12	0.460	25
MCK1016	10 - 16/16	4 - 10/4 - 10	19.0	17	1.900	25
MCK1025	16 - 25/25	4 - 10/4 - 10	19.0	17	1.900	25
MCK3535	16 - 25/25 - 35	16 - 25/16 - 35	20.0	17	1.750	25
MCK2550	35/50	4 - 25/4 - 25	24.8	23	4.400	25
MCK5050	35/50	16 - 35/25 - 50	26.5	23	4.200	25
MCK3570	50 - 70/-	4 - 35/4 - 35	33.8	28	10.700	10

See next page

Branch clamps in C-type, Cu, multi-purpose clamps

Part No.	Cross section main conductor mm ² rm/re		Dimension mm		Weight/pcs. ~kg	Packing unit/pcs
	Main conductor	Tab conductor	b	l		
MCK3595	95/-	16 - 35	41.0	30	15.000	10
MCK7095	95/-	35 - 70	41.0	30	14.000	10
MCK120120	120/-	35 - 120	45.0	30	16.550	10
MCK150150	150/-	70 - 150	53.0	35	23.000	5
MCK185185	185/-	95 - 185	60.0	40	33.000	5

Branch clamps in H-type, Cu



- ▶ For non-tension copper cables, e.g. to DIN 48201-1
- ▶ Ideal for clamping identical conductor cross-sect. e.g. to DIN EN 60228 Cl. 1 and 2
- ▶ Lightning protection tested to EN 50164-1
- ▶ No need to cut the main conductor

Characteristics

- H-shape allows simple processing
- Optimum conducting characteristics when used with compound

Material

- Copper (ETP)

Surface

- Tin-plated to protect against corrosion

Technical instructions

- Tool: see page 134

Additional information

- Part Number appendix for bright version „BK“
- * = To EN 50164-1 lightning current tested

Part No.	Cross section main conductor mm ² rm/re		Hint	Dimension mm		Weight/pcs. ~kg	Packing unit/pcs
	Main conductor	Tab conductor		b	l		
AH7070	70	70	*	17.0	28.0	6.5	25
AH9595	95	95		22.0	30.0	10.0	25
AH120120	120	120		24.0	25.0	9.8	25

Compound for branch clamps



- ▶ Optimum conductivity properties for processing aluminium cable lugs and connectors and branch clamps (C and H-type)

Characteristics

- Water-resistant, with corundum for destroying the oxidation layer
- Content/tin: 0.125 kg

Part No.
KF125