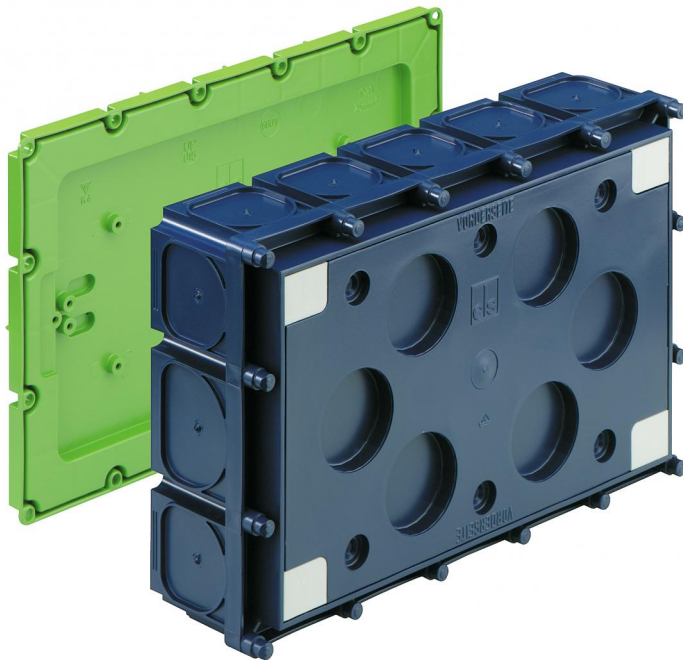


Mounting box
K4 EK



K4 EK

Mounting box

Productnumber: 98000401
Dimensions: 311 x 202 x 87 mm

Mounting box, prepared to take the WK terminal blocks 2.5 - 25 mm², suitable to take a 40-pole telephone terminal strip, as a telephone continuity box acc. to DIN 47614-615 or as a small distribution board in combination with the UP 015 (1-row, 15 distribution units), with protection class IP30, Rated insulation voltage: 400V AC, Halogen free

magnet and nail installation, membrane for perforation, Sealing area M16 - M50, support spar compatible



Technical Data

electrical characteristics

| | |
|------------------------------|-----------------------|
| Rated insulation voltage AC: | 400 V |
| Type of protection: | IP30 |
| Suitable for: | Concrete construction |
| UL Type Rating: | not specified |

Colours

| | |
|---------------|-------|
| Cover colour: | other |
|---------------|-------|

Dimensions

| | |
|---------|--------|
| Width: | 311 mm |
| Length: | 202 mm |
| Height: | 87 mm |

Material characteristics

| | |
|--|--------|
| Industry quality: | no |
| Halogen free: | yes |
| Flammability class according with UL94: | HB |
| Glow-wire flammability according to EN 60695-2-11: | 650 °C |

mechanical properties

| | |
|--------------------|------------------------------|
| Type of fastening: | magnet and nail installation |
|--------------------|------------------------------|

Ambient conditions

| | |
|------------------------------|--------|
| max. relative humidity 25°C: | - % |
| max. relative humidity 40°C: | 50 % |
| Min. ambient temperature: | -25 °C |
| Max. ambient temperature: | 40 °C |
| 24h ambient temperature: | 35 °C |

Material

| | |
|---------------------|---------------|
| Base unit material: | Polypropylene |
| Cover material: | Polypropylene |

Accessories

[46051001 - WK 100 KLS-10² - Terminal block](#)

[46051601 - WK 160 KLS-16² - Terminal block](#)

[46053501 - WK 250 KLS-25² - Terminal block](#)

[97925001 - HFL - IBT Accessories](#)

[97929901 - HM-UNI - IBT Accessories](#)

[98010401 - K4 VD - sealing plate](#)

[19599501 - LFR - Stepped drill](#)

[97022001 - RVB 20 - Conduit coupling](#)

[97022501 - RVB 25 - Conduit coupling](#)

[97023201 - RVB 32 - Conduit coupling](#)

[97024001 - RVB 40 - Conduit coupling](#)

[97810001 - IBT LZA-OE - Hole punch](#)

[97811801 - IBT LZA-18 - Hole punch](#)

[97812301 - IBT LZA-23 - Hole punch](#)

[97881401 - IBT STE-LST/14 - Punch set](#)

[97881801 - IBT STE-LST/18 - Punch set](#)

[97882301 - IBT STE-LST/23 - Punch set](#)

[97883001 - IBT STE-LST/30 - Punch set](#)

[97883901 - IBT STE-LST/39 - Punch set](#)

[97891401 - IBT STE-LZA/14 - Punch set](#)

[97891801 - IBT STE-LZA/18 - Punch set](#)

[97892301 - IBT STE-LZA/23 - Punch set](#)

[97915501 - WED - Expansion mandrel](#)

[97924001 - NAS-AL - IBT Accessories](#)

[97924201 - NA-AL - IBT Accessories](#)

[97924301 - NA-AL/gl - IBT Accessories](#)

[97926001 - ANSW - IBT Accessories](#)

[97953601 - STH-ELP - Cartridge insert](#)

[97957001 - STH 70 - Support spar](#)

[97959001 - STH 90 - Support spar](#)

[97960001 - STH 100 - Support spar](#)

[97961001 - STH 110 - Support spar](#)

[97963001 - STH 130 - Support spar](#)

[97964001 - STH 140 - Support spar](#)

[97965001 - STH 150 - Support spar](#)

[97967001 - STH 170 - Support spar](#)

[97969001 - STH 190 - Support spar](#)

[97973001 - STH 230 - Support spar](#)

[97974001 - STH 240 - Support spar](#)

[97979001 - STH 290 - Support spar](#)

Cable gland

