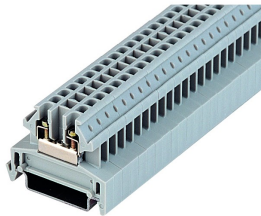


**IK3BL**

21.04.2021


**General Data**

Type Reference	IK3BL
Description	Feed-through terminal, screw connection
Approvals	CE, CSA, DNVGL, Lloyds, UKCA, UR
Terminal type	Terminal block
Terminal width	5.1 mm
Mounting method	top hat rail N35, EN60715 TH35
Connection type	screw connection, slotted screw
Thread size of screw connection	M2.5
Torque	0.5 Nm
Rated cross section	2.5 mm <sup>2</sup>
Wire size (solid)	0.5 ... 4 mm <sup>2</sup>
Wire size (stranded)	0.5 ... 2.5 mm <sup>2</sup>
Rated voltage	750 V
Rated current	25 A
Max. storage temperature	-40°C ... 80°C
Max. operating temperature	-30°C ... 40°C

Photo

**Data acc. to IEC 60947-7-1**

Flammability class acc. to UL94	V2
Pollution degree	3
Overvoltage category	III
Material group	II
Insulating material	PA 6.6
Stripping length	8 mm

**Data acc. to UL1059**

Torque	5 lb In
Wire size (solid)	22-12 AWG



Rated voltage	600 V
Rated current	20 A

**Data acc. to UL1059**

Wire size (solid)	12 AWG
Rated voltage	600 V
Rated current	25 A

**Data acc. to UL1059**

Torque	0.5 Nm
Wire size (solid)	18-12 AWG
Rated voltage	600 V
Rated current	25 A

**Data acc. to UL1059**

Wire size (solid)	18-12 AWG
Rated voltage	600 V
Rated current	25 A

**Data acc. to UL1059**

Wire size (solid)	2.5 mm <sup>2</sup>
Rated voltage	600 V
Rated current	30 A

