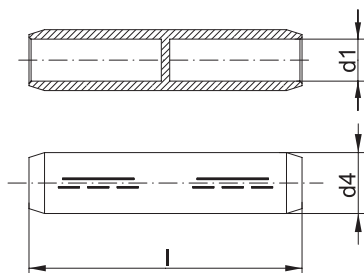




Compression joints, Al



- ▶ For non-tension connections of medium-voltage aluminium cable 10-30 kV
- ▶ For non-tension connections of aluminium conductors to DIN EN 60228 and aluminium cables to DIN EN 50182 and pre-rounded sector shaped conductors
- ▶ Tube dimension to DIN 46267, Part 2
- ▶ With code number for clear tool assignment
- ▶ Filled with contact grease for optimum crimp characteristics

Characteristics

- Also available as barrier design with oil stop
- With chamfered edges for reduced wrapping during assembly
- Easy to process due to crimp markings
- Simple cable entry due to internal chamfer

Material

- E-aluminium

Surface

- Bright

Technical instructions

- Tool: see page 103

Additional information

- re = round single solid wire, rm = round multi-stranded, se = sector shaped single solid wire, sm = sector shaped multi-stranded, sector shaped conductors must be pre-rounded

Part No.	Nominal cross section mm ²		Code	Dimension mm			Number of crimps		Weight 100 pcs. ~kg	Packing unit/ pcs
	rm/sm	re/se		d1	d4	l	Al (7 mm)	Al (wide)		
Standard type										
405R	35	50	14	8.2	14	90	4/4	2/2	2.7	10
406R	50	70	16	10.0	16	90	4/4	2/2	3.4	10
407R	70	95	18	11.5	18.5	95	4/4	2/2	4.6	10
408R	95	120	22	13.5	22	100	4/4	2/2	6.8	10
409R	120	150	22	15.0	23	105	4/4	2/2	7.4	10
410R	150	185	25	16.5	25	105	4/4	2/2	8.7	10
411R	185	240	28	18.5	28.5	125	5/5	2/2	13.4	5
412R	240	300	32	21.3	32	125	5/5	2/2	15.7	5
413R	300	--	34	23.6	34	125	5/5	2/2	16.3	1
414R	400	--	38	26.25	38	150	--	3/3	25.8	1
Barrier version										
415R	35	50	14	8.0	14	95	4/4	2/2	3.1	5
416R	50	70	16	9.8	16	95	4/4	2/2	5.6	5
417R	70	95	18	11.2	18.5	100	4/4	2/2	6.1	5
418R	95	120	22	13.2	22	105	4/4	2/2	9.2	5
419R	120	150	22	14.7	23	110	4/4	2/2	10.3	5
420R	150	185	25	16.3	25	110	4/4	2/2	12.0	5
421R	185	240	28	18.3	28.5	130	5/5	2/2	15.6	5
422R	240	300	32	21.0	32	130	5/5	2/2	19.1	5
423R	300	--	34	23.3	34	135	5/5	2/2	30.7	1
424R	400	--	38	26.0	38	165	--	3/3	30.0	1