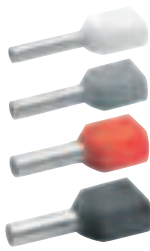


## Insulated twin cable end-sleeves



- ▶ For fine and superfine stranded conductors, e.g. to DIN EN 60228 Cl. 5 and 6
- ▶ For looping of clamps
- ▶ Colour-coding following DIN 46228 part 4 (0.5 - 16 mm<sup>2</sup>)
- ▶ Halogen-free

### Characteristics

- Heat resistant to 105° C

### Material

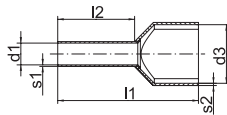
- Copper (EN13600)
- Synthetic material: polypropylene

### Surface

- Tin-plated to protect against corrosion

### Technical instructions

- Tool: see page 153



Nominal cross section mm <sup>2</sup>	Part No.	Colour	Dimension mm						Weight/ 1000 pcs. ~ kg	Packing unit/ pcs
			d1	d3	l1	l2	s1	s2		
2 x 0.25	<b>8678</b>		1.20	2.3/3.9	15.0	8	0.15	0.25	0.110	1000
2 x 0.34	<b>8688</b>		1.20	2.3/3.9	15.0	8	0.15	0.25	0.110	1000
2 x 0.5	<b>8698</b>		1.40	3.0/5.2	15.0	8	0.15	0.25	0.110	1000
2 x 0.75	<b>8708</b>		1.70	3.3/5.5	15.0	8	0.15	0.25	0.130	1000
	<b>87010</b>		1.70	3.3/5.5	17.0	10	0.15	0.25	0.150	1000
2 x 1	<b>8718</b>		2.00	4.0/6.0	15.0	8	0.15	0.30	0.170	1000
	<b>87110</b>		2.00	4.0/6.0	17.0	10	0.15	0.30	0.170	1000
2 x 1.5	<b>8728</b>		2.20	4.2/7.2	16.0	8	0.15	0.30	0.183	1000
	<b>87212</b>		2.20	4.2/7.2	20.0	12	0.15	0.30	0.237	1000
2 x 2.5	<b>87310</b>		2.80	4.8/8.4	18.5	10	0.20	0.30	0.312	100
	<b>87313</b>		2.80	4.8/8.4	21.5	13	0.20	0.30	0.340	100
2 x 4	<b>87412</b>		3.70	5.7/9.6	23.0	12	0.20	0.40	0.467	100
2 x 6	<b>87514</b>		4.80	7.7/10.8	26.0	14	0.20	0.40	0.730	100
2 x 10	<b>87614</b>		6.40	8.0/13.8	26.0	14	0.20	0.40	0.884	100
2 x 16	<b>87714</b>		8.20	10.4/19.2	30.0	14	0.20	0.40	1.273	100