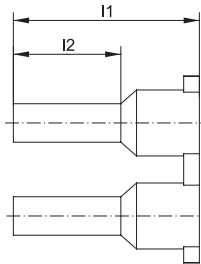
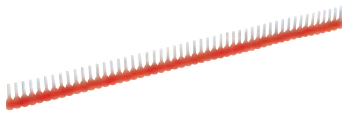




### Insulated cable end-sleeves, strip form



- ▶ For fine and superfine stranded conductors, e.g. to DIN EN 60228 Cl. 5 and 6
- ▶ Crimped cable end-sleeves for simple mounting to cable clamps
- ▶ Halogen-free



#### Characteristics

- Colour-coding and tube dimension to DIN 46228, part 4
- Heat resistant to 105° C



#### Material

- Copper (EN13600)
- Synthetic material: polypropylene

#### Surface

- Tin-plated to protect against corrosion

Nominal cross section mm <sup>2</sup>	Part No.	Colour	Dimension mm		Weight/ 1000 pcs. ~ kg	Packing unit/pcs
			l1	l2		
0.5	ST9698		14	8	0.100	500
0.75	ST9708		14	8	0.100	500
1	ST9718		14	8	0.100	500
1.5	ST9728		14	8	0.100	500
2.5	ST9738		14	8	0.100	500

### Insulated cable end-sleeves, small coil



- ▶ For fine and superfine stranded conductors, e.g. to DIN EN 60228 Cl. 5 and 6
- ▶ Easy-Entry insulation for optimal cable insertion
- ▶ Automatic processing due to coil shape
- ▶ Halogen-free



#### Characteristics

- Colour-coding and tube dimension to DIN 46228, part 4
- Heat resistant to 105° C



#### Material

- Copper (EN13600)
- Synthetic material: polypropylene

#### Surface

- Tin-plated to protect against corrosion

Nominal cross section mm <sup>2</sup>	Part No.	Colour	Dimension mm		Weight/ 1000 pcs. ~ kg	Packing unit/pcs
			l1	l2		
0.5	BAK9698		14	8	0.136	1100
0.75	BAK9708		14	8	0.154	1100
1	BAK9718		14	8	0.187	800
1.5	BAK9728		14	8	0.200	800
2.5	BAK9738		14	8	0.300	500