

T2FH 232-11/11

- 2 contacts per pedal
- Protective shield with wide opening
- double-pedal type
- Low operating height of pedal
- High level of stability
- Metal enclosure
- 2 cable entries M 25 x 1.5

Data

Ordering data

Product type description	T2FH 232-11/11
Article number (order number)	151181584
EAN (European Article Number)	4030661522326
eCl@ss number, version 12.0	27-37-12-18
eCl@ss number, version 11.0	27-37-12-18
eCl@ss number, version 9.0	27-37-12-18
ETIM number, version 7.0	EC001258
ETIM number, version 6.0	EC001258

Approvals - Standards

Certificates	cULus CCC
--------------	--------------

General data

Standards	BG-GS-ET-15 DIN VDE 0660-200 EN IEC 60947-5-1
-----------	---

Housing material	Aluminium
Housing coating material	powder-coated
Material of the housing cover	Aluminium
Material of the pedal	Glass-fibre, reinforced thermoplastic
Material of the protective shield	Aluminium
Colour of the housing	RAL 9006 (White aluminum)
Gross weight	2,990 g

General data - Features

Protective shield	Yes
Probing possible	Yes
Number of pedals, NC	1
Number of pedals, NO	1

Mechanical data

Mechanical life, minimum	1,000,000 Operations
--------------------------	----------------------

Mechanical data - Connection technique

Termination	Screw terminals M20 x 1.5
Cable section, maximum	1 x 2.5 mm ²
Note (Cable section)	All indications including the conductor ferrules.

Mechanical data - Dimensions

Width	295 mm
Height	189 mm
Depth	274 mm

Ambient conditions

Degree of protection	IP65
----------------------	------

Ambient temperature

-25 ... +70 °C

Ambient conditions - Insulation values

Rated insulation voltage U_i 500 V

Rated impulse withstand voltage U_{imp} 6 kV

Electrical data

Thermal test current 10 A

Utilisation category AC-15 230 VAC

Utilisation category AC-15 4 A

Utilisation category DC-13 24 VDC

Utilisation category DC-13 1 A

Switching element NO contact, NC contact

Switching principle Slow action

Ordering code

Product type description:

(1)2F(2) 232-(3)-(4)

(1)

T Slow action (not for AF/S)

Z Snap action

(2)

without without protective shield

H with protective shield

(3)

11/11 1 NO contacts/1 NC contact

02/02 2 NC contact

20/20 2 NO contacts

22/22 2 NO contacts/2 NC contact

04/04

4 NC contact

40/40

4 NO contacts

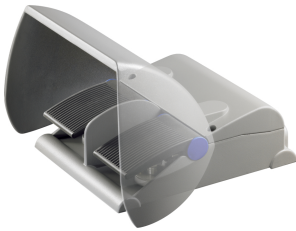
(4)

HD

phase actuation with pressure point

Pictures

Product picture (catalogue individual photo)



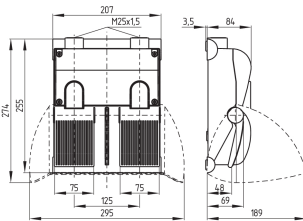
ID: ktfh2f01

| 299.7 kB | .jpg | 352.778 x 285.397 mm - 1000 x 809 px - 72 dpi

| 28.4 kB | .png | 74.083 x 59.972 mm - 210 x 170 px - 72 dpi

| 35.1 kB | .jpg | 123.472 x 99.836 mm - 350 x 283 px - 72 dpi

Dimensional drawing basic component



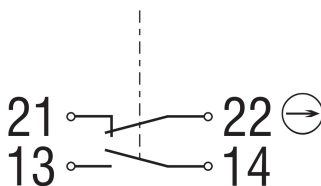
ID: 1t2f-g02

| 44.4 kB | .cdr |

| 11.9 kB | .png | 74.083 x 51.858 mm - 210 x 147 px - 72 dpi

| 156.7 kB | .jpg | 352.778 x 247.297 mm - 1000 x 701 px - 72 dpi

Diagram



ID: ktf--k01

| 16.0 kB | .cdr |

| 54.5 kB | .jpg | 352.778 x 195.439 mm - 1000 x 554 px - 72 dpi

| 2.8 kB | .png | 74.083 x 40.922 mm - 210 x 116 px - 72 dpi

Schmersal Ltd., Sparrowhawk Close, WR14 1GL Malvern

The details and data referred to have been carefully checked. Images may diverge from original. Further technical data can be found in the manual. Technical amendments and errors possible.

Generated on: 12/12/2023, 10:14