

Z2F 232-11/11

- 2 contacts per pedal
- double-pedal type
- Low operating height of pedal
- High level of stability
- Metal enclosure
- 2 cable entries M 25 x 1.5

Data

Ordering data

Product type description	Z2F 232-11/11
Article number (order number)	151181590
EAN (European Article Number)	4030661527864
eCl@ss number, version 12.0	27-37-12-18
eCl@ss number, version 11.0	27-37-12-18
eCl@ss number, version 9.0	27-37-12-18
ETIM number, version 7.0	EC001258
ETIM number, version 6.0	EC001258

Approvals - Standards

Certificates	cULus CCC
--------------	--------------

General data

Standards	BG-GS-ET-15 DIN VDE 0660-200 EN IEC 60947-5-1
Housing material	Aluminium

Housing coating material	powder-coated
Material of the housing cover	Aluminium
Material of the pedal	Glass-fibre, reinforced thermoplastic
Material of the protective shield	Aluminium
Colour of the housing	RAL 9006 (White aluminum)
Gross weight	2,080 g

General data - Features

Probing possible	Yes
Number of pedals, NC	1
Number of pedals, NO	1

Mechanical data

Mechanical life, minimum	1,000,000 Operations
--------------------------	----------------------

Mechanical data - Connection technique

Termination	Screw terminals M20 x 1.5
Cable section, maximum	1 x 2.5 mm ²
Note (Cable section)	All indications including the conductor ferrules.

Mechanical data - Dimensions

Width	295 mm
Height	189 mm
Depth	274 mm

Ambient conditions

Degree of protection	IP65
Ambient temperature	-25 ... +70 °C

Ambient conditions - Insulation values

Rated insulation voltage U_i	500 V
Rated impulse withstand voltage U_{imp}	6 kV

Electrical data

Thermal test current	10 A
Utilisation category AC-15	230 VAC
Utilisation category AC-15	4 A
Utilisation category DC-13	24 VDC
Utilisation category DC-13	1 A
Switching element	NO contact, NC contact
Switching principle	Snap action

Ordering code

Product type description:
(1)2F(2) 232-(3)-(4)

(1)

T	Slow action (not for AF/S)
Z	Snap action

(2)

without	without protective shield
H	with protective shield

(3)

11/11	1 NO contacts/1 NC contact
02/02	2 NC contact
20/20	2 NO contacts
22/22	2 NO contacts/2 NC contact
04/04	4 NC contact
40/40	4 NO contacts

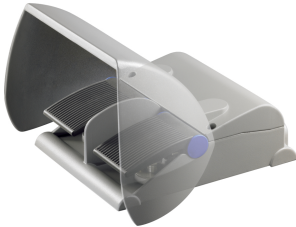
(4)

HD

phase actuation with pressure point

Pictures

Product picture (catalogue individual photo)



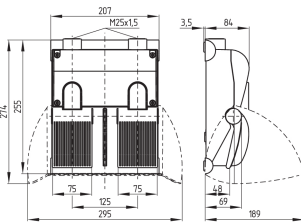
ID: ktfh2f01

| 299.7 kB | .jpg | 352.778 x 285.397 mm - 1000 x 809 px - 72 dpi

| 28.4 kB | .png | 74.083 x 59.972 mm - 210 x 170 px - 72 dpi

| 35.1 kB | .jpg | 123.472 x 99.836 mm - 350 x 283 px - 72 dpi

Dimensional drawing basic component



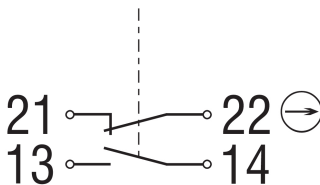
ID: 1t2f-g02

| 44.4 kB | .cdr |

| 11.9 kB | .png | 74.083 x 51.858 mm - 210 x 147 px - 72 dpi

| 156.7 kB | .jpg | 352.778 x 247.297 mm - 1000 x 701 px - 72 dpi

Diagram



ID: ktf--k01

| 16.0 kB | .cdr |

| 54.5 kB | .jpg | 352.778 x 195.439 mm - 1000 x 554 px - 72 dpi

| 2.8 kB | .png | 74.083 x 40.922 mm - 210 x 116 px - 72 dpi

Schmersal Ltd., Sparrowhawk Close, WR14 1GL Malvern

The details and data referred to have been carefully checked. Images may diverge from original. Further technical data can be found in the manual. Technical amendments and errors possible.

Generated on: 12/12/2023, 10:17