



TS 336-11Z-M20

- 1 Cable entry M 20 x 1.5
- Design to EN 50041
- Thermoplastic enclosure
- Double-insulated
- Good resistance to oil and petroleum spirit
- Wide range of alternative actuators
- Actuator heads can be repositioned by 4 x 90°

Data

Ordering data

Product type description	TS 336-11Z-M20
Article number (order number)	101155769
EAN (European Article Number)	4030661176604
eCl@ss number, Version 9.0	27-27-26-01
eCl@ss number, Version 11.0	27-27-26-01
ETIM number, version 7.0	EC000030
ETIM number, version 6.0	EC000030

Approval - Standards

Certificates	cULus CCC EAC
--------------	---------------------

General data

Housing construction form	Norm construction design
Actuator type to DIN EN 50041	B
Enclosure material	Plastic, glass-fibre reinforced thermoplastic, self-extinguishing

Material of the contacts, electrical	Silver
Gross weight	100 g

General data - Features

Safety functions	Yes
Number of auxiliary contacts	1
Number of safety contacts	1

Safety appraisal

Standards	BG-GS-ET-15 EN ISO 13849-1 EN 60947-5-1
Mission Time	20 Year(s)

Safety appraisal - Safety outputs

B _{10D} Normally-closed contact (NC)	20,000,000 Operations
---	-----------------------

Mechanical data

Actuating element	Plunger
Mechanical life, minimum	30,000,000 Operations
Actuating force, minimum	17 N
Actuating speed, maximum	0.5 m/s
Note (Switchover time)	Switchover time in accordance with actuating speed

Mechanical data - Connection technique

Terminal Connector	Screw terminals M20 x 1.5
Cable section, minimum	0.75 mm ²
Cable section, maximum	2.5 mm ²
Note (Cable section)	All indications about the cable section are including the conductor ferrules.

Mechanical data - Dimensions

Length of sensor	38 mm
Width of sensor	40.5 mm
Height of sensor	103.5 mm

Ambient conditions

Degree of protection	IP65 to EN 60529 IP67 to EN 60529
Ambient temperature, minimum	-30 °C
Ambient temperature, maximum	+80 °C

Ambient conditions - Insulation value

Rated insulation voltage U_i	500 V
Rated impulse withstand voltage U_{imp}	6 kV

Electrical data

Thermal test current	10 A
Required rated short-circuit current to EN 60947-5-1	1,000 A
Utilisation category AC-15	230 VAC
Utilisation category AC-15	4 A
Utilisation category DC-13	24 VDC
Utilisation category DC-13	4 A
Switching element	NO contact, NC contact
Switching principle	Creep circuit element
Bounce duration, maximum	2 ms
Switching frequency	5,000 /h

Pictures

Product picture (catalogue individual photo)

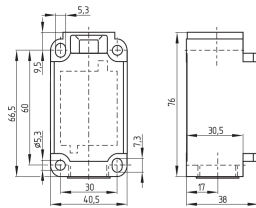


ID: k336sf01

| 632.4 kB | .jpg | 352.778 x 701.322 mm - 1000 x 1988 px - 72 dpi

| 78.9 kB | .png | 74.083 x 147.108 mm - 210 x 417 px - 72 dpi

Dimensional drawing basic component



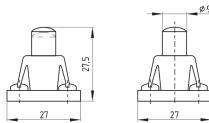
ID: 1-336g01

| 51.4 kB | .cdr |

| 4.1 kB | .png | 74.083 x 51.506 mm - 210 x 146 px - 72 dpi

| 107.0 kB | .jpg | 352.778 x 245.181 mm - 1000 x 695 px - 72 dpi

Dimensional drawing actuator



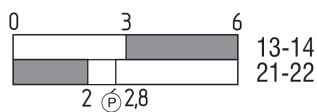
ID: 1s336g01

| 48.9 kB | .cdr |

| 2.7 kB | .png | 74.083 x 52.211 mm - 210 x 148 px - 72 dpi

| 52.6 kB | .jpg | 352.778 x 248.003 mm - 1000 x 703 px - 72 dpi

Switch travel diagram



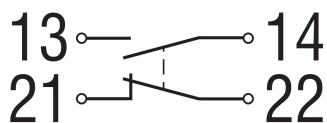
ID: kr335s08

| 24.6 kB | .cdr |

| 1.7 kB | .png | 74.083 x 23.283 mm - 210 x 66 px - 72 dpi

| 42.1 kB | .jpg | 352.778 x 111.478 mm - 1000 x 316 px - 72 dpi

Diagram



ID: k1o1sk01

| 52.2 kB | .jpg | 352.778 x 143.581 mm - 1000 x 407 px - 72 dpi

dpi

K.A. Schmersal GmbH & Co. KG, Möddinghofe 30, 42279 Wuppertal

The details and data referred to have been carefully checked. Images may diverge from original. Further technical data can be found in the manual. Technical amendments and errors possible.

Generated on: 03/02/2022, 08:26