



Z4V7H335-11Z-M20

- Metal enclosure
- Design to EN 50041
- 40,5 mm x 76 mm x 38 mm
- 1 Cable entry M 20 x 1.5
- only for positioning tasks
- Wide range of alternative actuators
- Good resistance to oil and petroleum spirit
- Actuator heads can be repositioned by 4 x 90°
- Snap action with constant contact pressure up to switching point

Data

Ordering data

Product type description	Z4V7H 335-11Z
Article number (order number)	101161691
EAN (European Article Number)	4030661196541
eCl@ss number, Version 9.0	27-27-06-01

Certifications

Certificates	cULus EAC
--------------	--------------

General data

Product name	Z 335 roller lever 7H
Housing construction form	Norm construction design
Enclosure material	Aluminium
Enclosure coating material	Painted
Material of the contacts, electrical	Silver
Lever material	Metal film
Roller material	Plastic
Weight	270 g

General data - Features

Number of auxiliary contacts	1
Number of safety contacts	1

Safety appraisal

Standards	BG-GS-ET-15 ISO 13849-1 EN 60947-5-1
Mission Time	20 Year(s)

Safety appraisal - Safety outputs

B10d Normally-closed contact (NC)	20,000,000 Operations
-----------------------------------	-----------------------

Mechanical data

Actuating element	Roller lever
Mechanical life, minimum	30,000,000 Operations
Actuating speed, maximum	2.5 m/s
Note (Actuating speed)	Actuating speed with actuating angle 30° to switch axis
Note Bounce duration	Bounce duration in accordance with actuating speed
Actuating torque, minimum	0.26 Nm

Mechanical data - Connection technique

Terminal Connector	Screw connection
Cable section, minimum	0.75 mm ²
Cable section, maximum	2.5 mm ²
Note (Cable section)	All indications about the cable section are including the conductor ferrules.

Mechanical data - Dimensions

Height of sensor	183 mm
Length of sensor	57.25 mm
Width of sensor	40.5 mm

Ambient conditions

Protection class	IP67
Ambient temperature, minimum	-30 °C
Ambient temperature, maximum	+80 °C

Ambient conditions - Insulation value

Rated impulse withstand voltage	6 kV
---------------------------------	------

Electrical data

Thermal test current	10 A
Required rated short-circuit current to EN 60947-5-1	1,000 A
Utilisation category AC-15	230 VAC
Utilisation category AC-15	4 A
Utilisation category DC-13	24 VDC
Utilisation category DC-13	4 A
Switching element	NO contact, NC contact
Switching principle	Snap switch element
Switching frequency	5,000 /h
Switchover time, maximum	2 ms

Documents

Operating instructions and Declaration of conformity

EC Declaration of conformity

UL Certificate

CCC certification

EAC certification

SISTEMA-VDMA library

Pictures

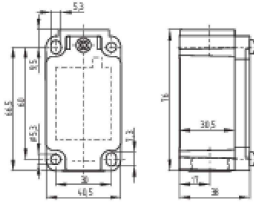
Product picture (catalogue individual photo)



ID: k335hf02

| 249,4 kB | .jpg | 26.649 x 73.452 mm - 320 x 882 Pixel - 305 dpi
 | 2,9 kB | .jpg | 35.278 x 35.278 mm - 100 x 100 Pixel - 72 dpi
 | 462,0 kB | .jpg | 148.519 x 409.575 mm - 421 x 1161 Pixel - 72 dpi
 | 136,9 kB | .png | 74.083 x 204.258 mm - 210 x 579 Pixel - 72 dpi

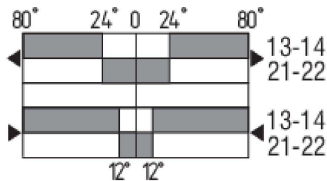
Dimensional drawing basic component



ID: 1-335g01

| 4,5 kB | .png | 74.083 x 51.506 mm - 210 x 146 Pixel - 72 dpi
 | 2,8 kB | .jpg | 35.278 x 35.278 mm - 100 x 100 Pixel - 72 dpi
 | 28,1 kB | .jpg | 112.889 x 78.669 mm - 320 x 223 Pixel - 72 dpi
 | 105,8 kB | .jpg | 352.778 x 245.886 mm - 1000 x 697 Pixel - 72 dpi
 | 96,7 kB | .cdr |

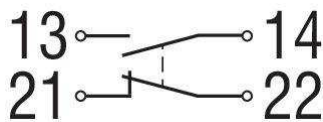
Switch travel diagram



ID: kh335s17

| 25,7 kB | .cdr |
 | 2,4 kB | .png | 74.083 x 40.569 mm - 210 x 115 Pixel - 72 dpi
 | 23,8 kB | .jpg | 112.889 x 61.736 mm - 320 x 175 Pixel - 72 dpi

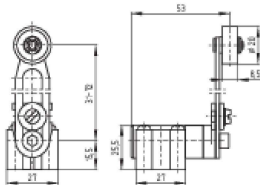
Diagram



ID: k1o1sk01

| 18,4 kB | .jpg | 112.889 x 45.861 mm - 320 x 130 Pixel - 72 dpi

Dimensional drawing actuator



ID: 1h355g02

| 104,9 kB | .jpg | 352.778 x 243.769 mm - 1000 x 691 Pixel - 72 dpi
 | 30,2 kB | .cdr |
 | 9,6 kB | .png | 74.083 x 51.153 mm - 210 x 145 Pixel - 72 dpi

System components

PS315 roller lever N300

103015108 PS315-Z11-N300

- Metal enclosure
- Quick connection technology as connection terminals rotated by 45°

- Simple and quick to adjust the control elements by 45°.
- cable entry 1 x M20 x 1,5
- Design to EN 50041
- Lever angle adjustable in 15° steps
- length adjustable in 2 mm steps



K.A. Schmersal GmbH & Co. KG, Möddinghofe 3, D-42279 Wuppertal

The details and data referred to have been carefully checked. Images may diverge from original. Further technical data can be found in the manual. Technical amendments and errors possible.

Generated on 31.03.2020 18:01:38