



### Z4VH335-11Z-M20

- Metal enclosure
- Design to EN 50041
- 40,5 mm x 76 mm x 38 mm
- 1 Cable entry M 20 x 1.5
- Wide range of alternative actuators
- Good resistance to oil and petroleum spirit
- Actuator heads can be repositioned by 4 x 90°
- Snap action with constant contact pressure up to switching point

#### Data

##### Ordering data

Product type description	Z4VH 335-11Z
Article number (order number)	101154520
EAN (European Article Number)	4030661172712
eCl@ss number, Version 9.0	27-27-26-01

##### Certifications

Certificates	cULus EAC
--------------	--------------

##### General data

Product name	Z 335 roller lever H
Housing construction form	Norm construction design
Actuator type to DIN EN 50041	A
Enclosure material	Aluminium
Enclosure coating material	Painted
Material of the contacts, electrical	Silver
Lever material	Metal film
Roller material	Plastic
Weight	265 g

##### General data - Features

Safety functions	Yes
Number of auxiliary contacts	1
Number of safety contacts	1

##### Safety appraisal

Standards	BG-GS-ET-15 ISO 13849-1 EN 60947-5-1
Mission Time	20 Year(s)

##### Safety appraisal - Safety outputs

B10d Normally-closed contact (NC)	20,000,000 Operations
-----------------------------------	-----------------------

**Mechanical data**

Actuating element	Roller lever
Mechanical life, minimum	30,000,000 Operations
Actuating speed, maximum	2.5 m/s
Note (Actuating speed)	Actuating speed with actuating angle 30° to switch axis
Note Bounce duration	Bounce duration in accordance with actuating speed
Actuating torque, minimum	0.26 Nm

**Mechanical data - Connection technique**

Terminal Connector	Screw connection
Cable section, minimum	0.75 mm <sup>2</sup>
Cable section, maximum	2.5 mm <sup>2</sup>
Note (Cable section)	All indications about the cable section are including the conductor ferrules.

**Mechanical data - Dimensions**

Height of sensor	134 mm
Length of sensor	60.55 mm
Width of sensor	40.5 mm

**Ambient conditions**

Protection class	IP67
Ambient temperature, minimum	-30 °C
Ambient temperature, maximum	+80 °C

**Ambient conditions - Insulation value**

Rated impulse withstand voltage	6 kV
---------------------------------	------

**Electrical data**

Thermal test current	10 A
Required rated short-circuit current to EN 60947-5-1	1,000 A
Utilisation category AC-15	230 VAC
Utilisation category AC-15	4 A
Utilisation category DC-13	24 VDC
Utilisation category DC-13	4 A
Switching element	NO contact, NC contact
Switching principle	Snap switch element
Switching frequency	5,000 /h
Switchover time, maximum	2 ms

**Documents****Operating instructions and Declaration of conformity****EC Declaration of conformity****UL Certificate****CCC certification****EAC certification**

## SISTEMA-VDMA library

### Pictures

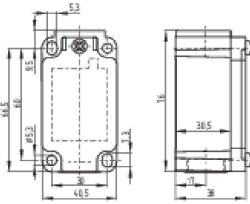
#### Product picture (catalogue individual photo)



ID: k335hf01

| 3,2 kB | .jpg | 35.278 x 35.278 mm - 100 x 100 Pixel - 72 dpi  
 | 297,1 kB | .jpg | 26.649 x 71.12 mm - 320 x 854 Pixel - 305 dpi  
 | 165,3 kB | .png | 74.083 x 197.556 mm - 210 x 560 Pixel - 72 dpi  
 | 524,1 kB | .jpg | 143.581 x 383.469 mm - 407 x 1087 Pixel - 72 dpi

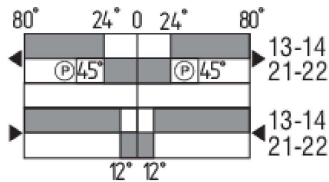
#### Dimensional drawing basic component



ID: 1-335g01

| 4,5 kB | .png | 74.083 x 51.506 mm - 210 x 146 Pixel - 72 dpi  
 | 2,8 kB | .jpg | 35.278 x 35.278 mm - 100 x 100 Pixel - 72 dpi  
 | 28,1 kB | .jpg | 112.889 x 78.669 mm - 320 x 223 Pixel - 72 dpi  
 | 105,8 kB | .jpg | 352.778 x 245.886 mm - 1000 x 697 Pixel - 72 dpi  
 | 96,7 kB | .cdr |

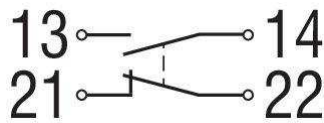
#### Switch travel diagram



ID: kh335s02

| 3,0 kB | .png | 74.083 x 40.569 mm - 210 x 115 Pixel - 72 dpi  
 | 25,4 kB | .cdr |  
 | 27,1 kB | .jpg | 112.889 x 61.736 mm - 320 x 175 Pixel - 72 dpi

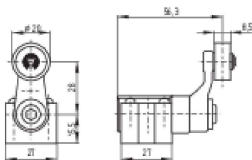
#### Diagram



ID: k1o1sk01

| 18,4 kB | .jpg | 112.889 x 45.861 mm - 320 x 130 Pixel - 72 dpi

#### Dimensional drawing actuator



ID: 1h336g01

| 65,6 kB | .cdr |  
 | 4,1 kB | .png | 74.083 x 51.858 mm - 210 x 147 Pixel - 72 dpi  
 | 84,5 kB | .jpg | 352.778 x 247.297 mm - 1000 x 701 Pixel - 72 dpi

### System components

#### PS315 roller lever H300

103015106 PS315-Z11-H300



- Metal enclosure
- Quick connection technology as connection terminals rotated by 45°
- Simple and quick to adjust the control elements by 45°.
- cable entry 1 x M20 x 1,5
- Design to EN 50041

K.A. Schmersal GmbH & Co. KG, Möddinghofe 3, D-42279 Wuppertal

The details and data referred to have been carefully checked. Images may diverge from original. Further technical data can be found in the manual. Technical amendments and errors possible.

Generated on 31.03.2020 17:54:55