



### ZS335-11Z-M20

- Metal enclosure
- Design to EN 50041
- 40,5 mm x 76 mm x 38 mm
- 1 Cable entry M 20 x 1.5
- Wide range of alternative actuators
- Good resistance to oil and petroleum spirit
- Actuator heads can be repositioned by 4 x 90°
- Snap action with constant contact pressure up to switching point

#### Data

##### Ordering data

Product type description	ZS 335-11Z
Article number (order number)	101166484
EAN (European Article Number)	4030661215358
eCl@ss number, Version 9.0	27-27-26-01

##### Certifications

Certificates	cULus EAC
--------------	--------------

##### General data

Product name	Z 335 plunger S
Housing construction form	Norm construction design
Actuator type to DIN EN 50041	B
Enclosure material	Aluminium
Enclosure coating material	Painted
Material of the contacts, electrical	Silver
Weight	185 g

##### General data - Features

Safety functions	Yes
Number of auxiliary contacts	1
Number of safety contacts	1

##### Safety appraisal

Standards	BG-GS-ET-15 ISO 13849-1 EN 60947-5-1
Mission Time	20 Year(s)

##### Safety appraisal - Safety outputs

B10d Normally-closed contact (NC)	20,000,000 Operations
-----------------------------------	-----------------------

##### Mechanical data

Actuating element	Plunger
Mechanical life, minimum	30,000,000 Operations
Actuating force, minimum	12 N
Actuating speed, maximum	0.5 m/s
Note Bounce duration	Bounce duration in accordance with actuating speed

#### **Mechanical data - Connection technique**

Terminal Connector	Screw connection
Cable section, minimum	0.75 mm <sup>2</sup>
Cable section, maximum	2.5 mm <sup>2</sup>
Note (Cable section)	All indications about the cable section are including the conductor ferrules.

#### **Mechanical data - Dimensions**

Height of sensor	103.5 mm
Length of sensor	38 mm
Width of sensor	40.5 mm

#### **Ambient conditions**

Protection class	IP67
Ambient temperature, minimum	-30 °C
Ambient temperature, maximum	+80 °C

#### **Ambient conditions - Insulation value**

Rated impulse withstand voltage	6 kV
---------------------------------	------

#### **Electrical data**

Thermal test current	10 A
Required rated short-circuit current to EN 60947-5-1	1,000 A
Utilisation category AC-15	230 VAC
Utilisation category AC-15	4 A
Utilisation category DC-13	24 VDC
Utilisation category DC-13	4 A
Switching element	NO contact, NC contact
Switching principle	Snap switch element
Switching frequency	5,000 /h
Switchover time, maximum	2 ms

#### **Documents**

##### **Operating instructions and Declaration of conformity**

##### **EC Declaration of conformity**

##### **UL Certificate**

##### **CCC certification**

##### **EAC certification**

##### **SISTEMA-VDMA library**

## Pictures

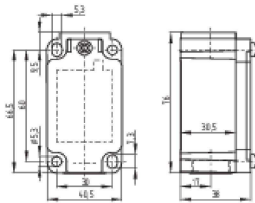
### Product picture (catalogue individual photo)



ID: k335sf01

| 156,7 kB | .png | 74.083 x 166.511 mm - 210 x 472 Pixel - 72 dpi  
 | 289,0 kB | .jpg | 26.649 x 59.877 mm - 320 x 719 Pixel - 305 dpi  
 | 454,9 kB | .jpg | 136.172 x 306.211 mm - 386 x 868 Pixel - 72 dpi  
 | 3,7 kB | .jpg | 35.278 x 35.278 mm - 100 x 100 Pixel - 72 dpi

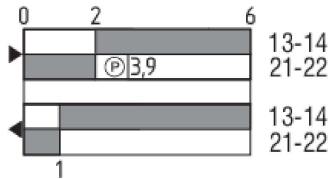
### Dimensional drawing basic component



ID: 1-335g01

| 4,5 kB | .png | 74.083 x 51.506 mm - 210 x 146 Pixel - 72 dpi  
 | 2,8 kB | .jpg | 35.278 x 35.278 mm - 100 x 100 Pixel - 72 dpi  
 | 28,1 kB | .jpg | 112.889 x 78.669 mm - 320 x 223 Pixel - 72 dpi  
 | 105,8 kB | .jpg | 352.778 x 245.886 mm - 1000 x 697 Pixel - 72 dpi  
 | 96,7 kB | .cdr |

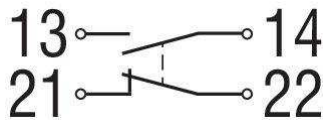
### Switch travel diagram



ID: kr335s12

| 2,4 kB | .png | 74.083 x 39.511 mm - 210 x 112 Pixel - 72 dpi  
 | 20,7 kB | .jpg | 112.889 x 60.325 mm - 320 x 171 Pixel - 72 dpi  
 | 25,9 kB | .cdr |

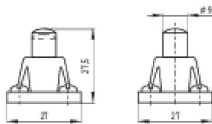
### Diagram



ID: k1o1sk01

| 18,4 kB | .jpg | 112.889 x 45.861 mm - 320 x 130 Pixel - 72 dpi

### Dimensional drawing actuator



ID: 1s336g01

| 2,7 kB | .png | 74.083 x 52.211 mm - 210 x 148 Pixel - 72 dpi  
 | 48,9 kB | .cdr |  
 | 52,6 kB | .jpg | 352.778 x 248.003 mm - 1000 x 703 Pixel - 72 dpi

## System components

### PS315 plunger S300

103015096 PS315-Z11-S300

- Metal enclosure
- Quick connection technology as connection terminals rotated by 45°
- Simple and quick to adjust the control elements by 45°.
- cable entry 1 x M20 x 1,5

- Design to EN 50041



K.A. Schmersal GmbH & Co. KG, Möddinghofe 3, D-42279 Wuppertal

The details and data referred to have been carefully checked. Images may diverge from original. Further technical data can be found in the manual. Technical amendments and errors possible.

Generated on 31.03.2020 17:39:48