

VD01D02 10A



Specifications

ETI Code	002243004
Description	VD01D02 10A
Weight	.84
Level	Fuse bases
Rated current (A)	10
Size	D02

Online product page 

Other documentation



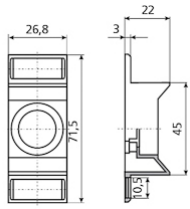
Technical data catalogue
EU declaration



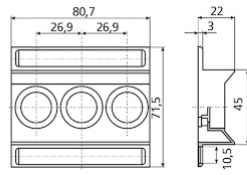
ETIM international clasification

Nominal rated current	10A
Colour code	Red
Construction size	D02

Dimension drawing



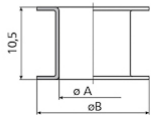
D01, D02



D01/3, D02/3

VD01 - E 14

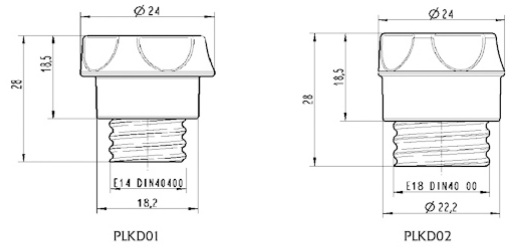
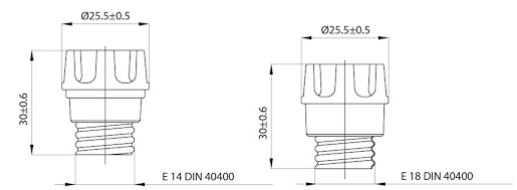
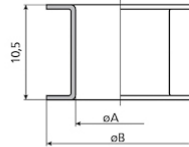
I_n [A]	$\varnothing A$	$\varnothing B$
2	7,9	12
4	7,9	12
6	7,9	12
10	9,1	12



VD02 - E 18

I_n [A]	$\varnothing A$	$\varnothing B$
2*	7,9	16,6
4*	7,9	16,6
6*	7,9	16,6
10*	9,1	16,6
16*	10,3	16,6
20	11,5	16,6
25	12,7	16,6
35	13,9	16,6
50	15,1	16,6

*For using fuse-links D01 and fuse bases D02.



PLKD01

PLKD02