

## VD01 4A



### Specifications

ETI Code	002241002
Description	VD01 4A
Weight	.42
Level	Fuse bases
Rated current (A)	4
Size	D01

Online product page 

### Other documentation



Technical data catalogue

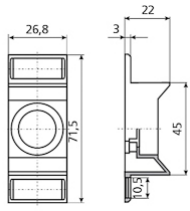
EU declaration



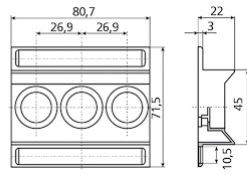
### ETIM international clasification

Nominal rated current	4A
Colour code	Brown
Construction size	D01

# Dimension drawing



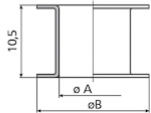
D01, D02



D01/3, D02/3

**VD01 - E 14**

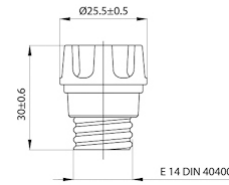
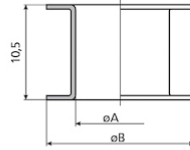
$l_n$ [A]	$\varnothing A$	$\varnothing B$
2	7,9	12
4	7,9	12
6	7,9	12
10	9,1	12



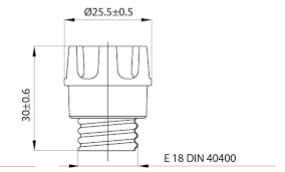
**VD02 - E 18**

$l_n$ [A]	$\varnothing A$	$\varnothing B$
2*	7,9	16,6
4*	7,9	16,6
6*	7,9	16,6
10*	9,1	16,6
16*	10,3	16,6
20	11,5	16,6
25	12,7	16,6
35	13,9	16,6
50	15,1	16,6

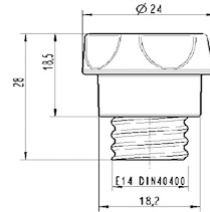
\*For using fuse-links D01 and fuse bases D02.



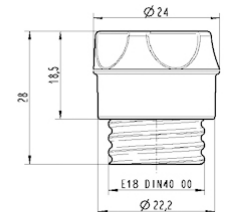
E 14 DIN 40400



E 18 DIN 40400



PLKD01



PLKD02