

VD02 35A



Specifications

ETI Code	002242003
Description	VD02 35A
Class name	Gauge ring
Product group accessories	Fuse Base D0
To use with	V D02 for fuse base E18
Type accessories	Gauge piece

Online product page 

Other documentation



Technical data catalogue

3D Model

Instruction manual

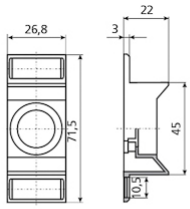
CE declaration



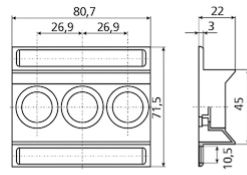
ETIM international clasification

Classification	EC000278
Class name	D0-system adapter sleeve
Colour code	Black
Construction size	D02
Nominal rated current	35A

Dimension drawing



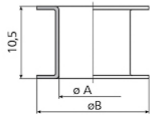
D01, D02



D01/3, D02/3

V D01 - E 14

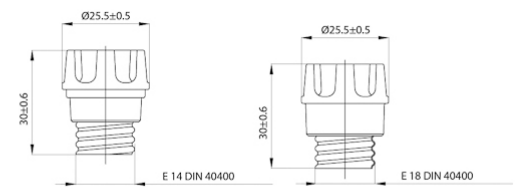
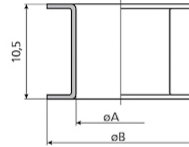
I_n [A]	$\varnothing A$	$\varnothing B$
2	7,9	12
4	7,9	12
6	7,9	12
10	9,1	12



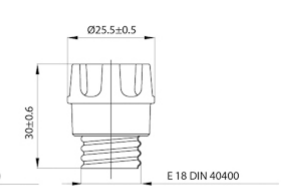
V D02 - E 18

I_n [A]	$\varnothing A$	$\varnothing B$
2*	7,9	16,6
4*	7,9	16,6
6*	7,9	16,6
10*	9,1	16,6
16*	10,3	16,6
20	11,5	16,6
25	12,7	16,6
35	13,9	16,6
50	15,1	16,6

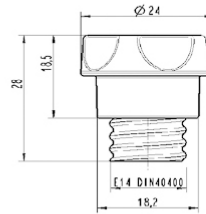
*For using fuse-links D01 and fuse bases D02.



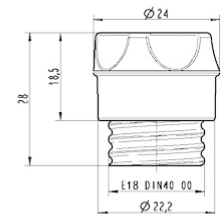
E 14 DIN 40400



E 18 DIN 40400



PLKD01



PLKD02