

# AU5.2

Name: **Mounting box, branched 2-way**  
Mounting box, branched 2-way

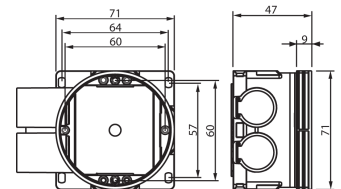
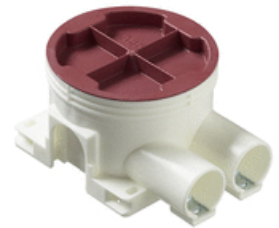
Type: AU5.2

EAN: 6410011523032

Description: The characteristics of this box are the same as the AU3.2; the difference is in the inlets. The box has 2 branch inlets for D20 conduits. There are also 3 knock-out on the side, and 2 on the bottom. Made of halogen free material (IEC/61249-2-21) and fulfills the requirements of the glow wire test according to the standard IEC/EN60670: 2005 (850 °C).

Package: 100

Unit: PCS



## Technical specification

### Dimensions

For plastic pipe  $\varnothing$ 16/20mm

### ETIM

ETIM 7 EC002601 (EC002601)

### ETIM 6

Mounting method	Flush mounted (plaster)
Shape	Round
Construction type	Device connection box (round/square)
Model	Single
Provided with revolving ring	no
Can be coupled	yes
Equipped with	None
Diameter	71 mm
Length	
Width	
Depth	47 mm
Internal depth	45 mm
For number of electric fittings	1
Mounting switching equipment	Screwing
With screws	yes
Housing feed-through by break-out opening	yes

Address  
P.O. Box 16  
06101 Porvoo  
FINLAND

ABB Exchange  
+358 10 22 11

Customer service  
kotimaanmyynti@fi.abb.com

Web  
<http://www.abb.fi>

Business ID  
0763403-0

# AU5.2

Housing feed-through by seal membrane	no
Housing feed-through by nozzle	yes
Housing feed-through by step membrane	no
For tubediameter	20/25 mm
Suitable for cable diameter	
Pipe locking	yes
Pipe locking optional	no
Inlet from the rear	yes
Number of inlets	2
Number of included spouts	2
Material	Plastic
Halogen free	yes
Surface protection	Untreated
Colour	White
Degree of protection (IP)	Other
Cover	Not transparent
Cover attachment	Snapped on
Sealable	no
Circuit integrity	None
With screening	no
Wind proof	no
Max. conductor cross section	0 mm <sup>2</sup>
Number of poles of the clamp	
Clamp position fixed	no
Luminaire hook mounting	no
Nozzle	None
With nail lugs	yes
Special application	