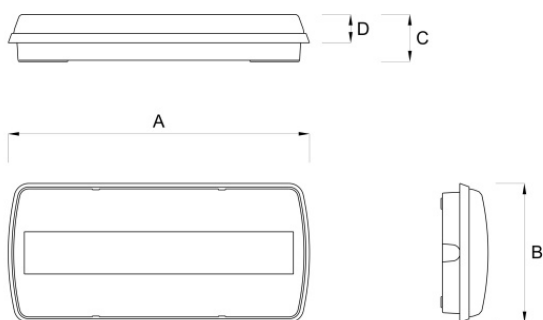


STEP LED

Item code **SD1307**
 Descriptive code **SD08N10ABRT**



A=337mm B=155mm C=53mm D=32mm

Luminaire description

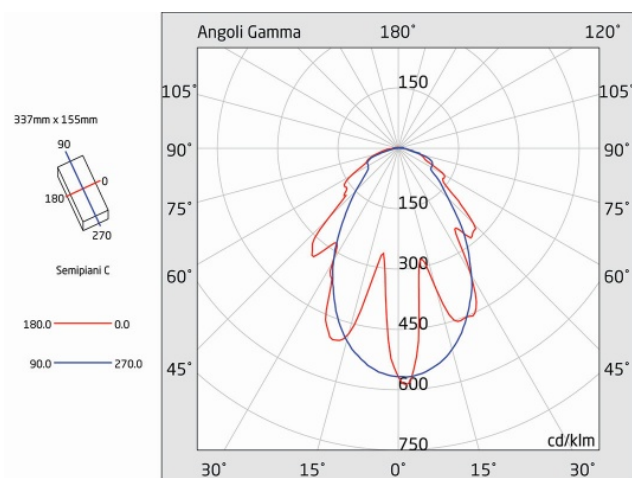
- STEP LED 200LM 1H NM/M IP40 ENERGY TEST

Technical characteristics

- Function: Energy Test (Self-contained with self-diagnosis)
- Duration: 1h
- Type: NM/M (Non-Maintained/Maintained)
- Maintained mode can be turned on/off with an external switch
- Minimum flux in emergency (EN 60598-2-22): 200lm
- Flux in permanent mode: 200lm
- Battery: Li-FePO4 6,4V 0,55Ah
- Battery type: Lithium iron phosphate
- Recharge time: 12h
- Battery status: battery disconnection warning
- Power supply: 230Vac
- Input power with charged battery: 2,5W
- Insulation class: II
- Protection degree: IP40
- Protection degree against mechanical impacts: IK07
- Working temperature: 0°C to +40°C
- Colour: White
- Signaling visibility with pictogram (EN 1838): 26 m
- Compliant to European standards: EN 60598-1, EN 60598-2-22, EN 61347-1, EN 61347-2-7, EN 61347-2-13, EN 62031, EN 62384
- Photobiological safety exempt group according to EN 62471
- Compliant to RoHS2 2011/65/UE
- Glow wire 850 °C
- Installation: wall, ceiling, flag-style*, busbar*, recessed*, 45° bracket* (* with accessory)

Light source characteristics

- Type: LED
- Lamps: 10 LED
- Color temperature: 6000K



An UNI EN ISO 9001 certified company

LINERGY Srl - Via A. De Gasperi, 9 - 63075 Acquaviva Picena (AP) - ITALY - Tel. +39 0735 5974 - Fax +39 0735 597474 - www.linergy.it - info@linergy.it

Subject to change without notice. 14/05/2021

STEP LED

Item code **SD1307**

Descriptive code **SD08N10ABRT**

Standard mounting accessories



A234
AESTHETIC FRAME FOR STEP

Mounting accessories



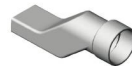
A005
BUSBAR KIT



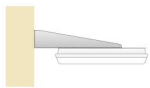
A015
PROTECTIVE GRATING



A024
WALL BOX RECESSED INSTALLATION STEP



A044
IP65 CONNECTOR D=16MM



A047
KIT FOR FLAG-STYLE FASTENING



A048
PLASTERBOARD AND DROPPED-CEILING
FASTENING KIT STEP



A049
FLUSH-WALL INTEGRATING KIT



A050
SIGNALING KIT STEP



A092
CLASP FOR FIXING AT 45 DEGREES

Pictograms



A177
PICTOGRAM FOR STEP ARROW LEFT



A178
PICTOGRAM FOR STEP ARROW RIGHT



An UNI EN ISO 9001 certified company

LINERGY Srl - Via A. De Gasperi, 9 - 63075 Acquaviva Picena (AP) - ITALY - Tel. +39 0735 5974 - Fax +39 0735 597474 - www.linergy.it - info@linergy.it

Subject to change without notice. 14/05/2021

TECHNICAL SHEET

Emergency luminaire

STEP LED

Item code **SD1307**

Descriptive code **SD08N10ABRT**



A179

PICTOGRAM FOR STEP ARROW DOWN

Commander



A350

CONTROLLER FOR THE REMOTE
MANAGEMENT OF REST MODE



An UNI EN ISO 9001 certified company

LINERGY Srl - Via A. De Gasperi, 9 - 63075 Acquaviva Picena (AP) - ITALY - Tel. +39 0735 5974 - Fax +39 0735 597474 - www.linergy.it - info@linergy.it

Subject to change without notice. 14/05/2021