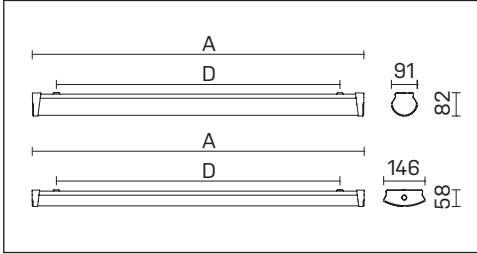
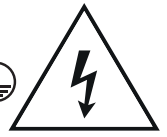


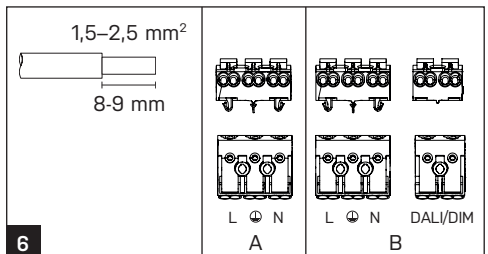
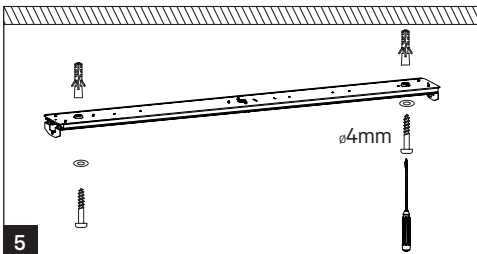
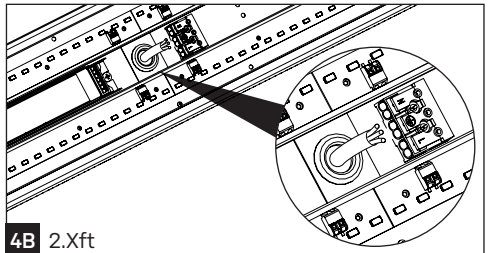
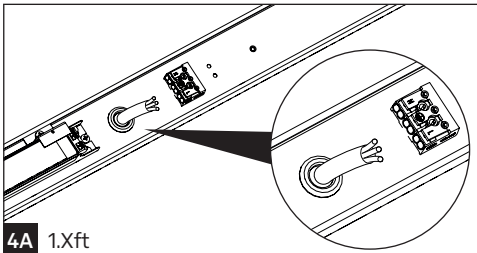
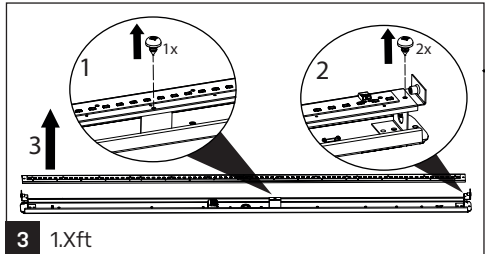
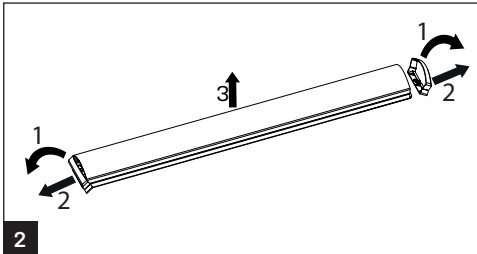
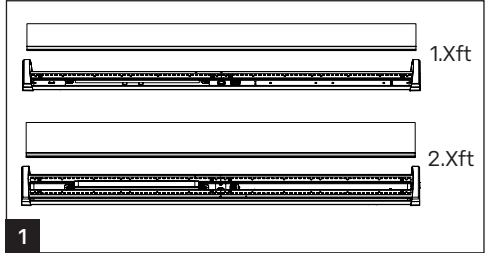
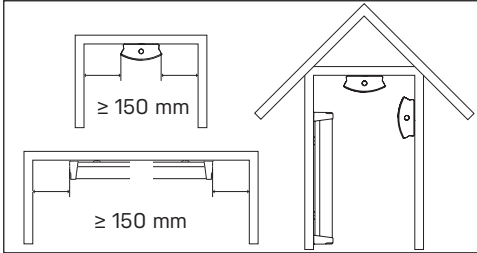
IP40



220-240V
50/60Hz



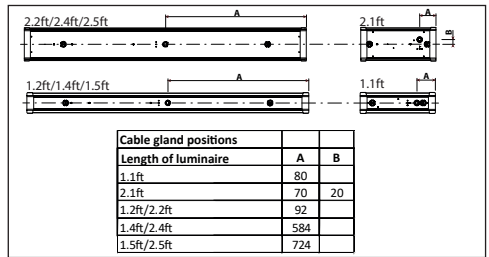
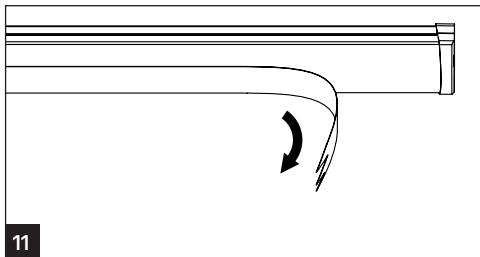
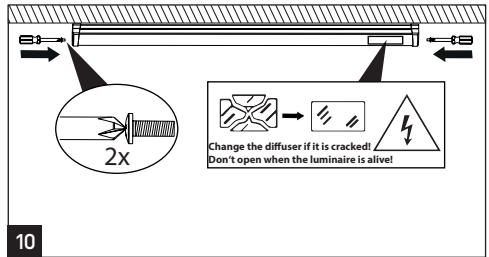
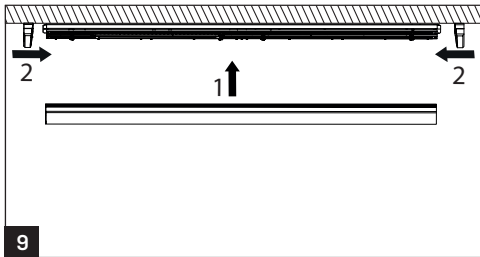
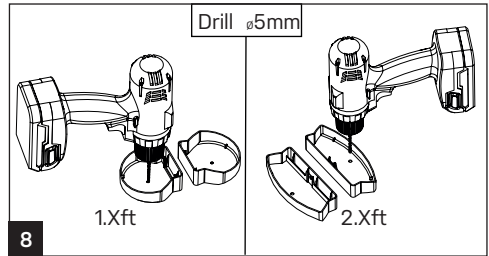
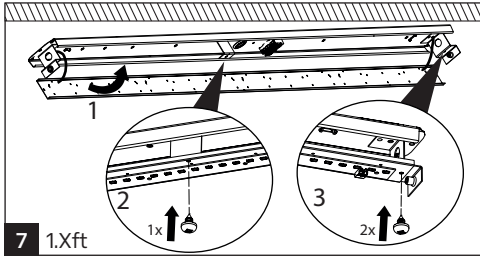
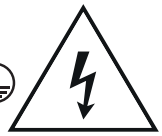
	A [mm]	D [mm]
1.1ft	330	220
2.1ft	330	250
1.2ft, 2.2ft	610	500
1.4ft, 2.4ft	1170	1000
1.5ft, 2.5ft	1450	1000



IP40



220-240V
50/60Hz



Installation can only be carried out by an authorized person and according to the mounting instructions. Any other installation is considered to be improper. For well installation and good luminaire work is necessary ensure a planarity of a mounting surface. Make sure that the luminaire is always disconnected from the power supply before the installation work. Do not use the luminaire if damaged or if damaged the power cable. Only damp microfibre cloth can be used for cleaning. Technical changes are subjected without notice. Do not dispose the luminaire or its parts as household waste, but make the proper recycling.

Table of maximal number of luminaires in one line			10A B Σ	16A B Σ	10A C Σ	16A C Σ
Length	Σlm	Σlm	luminaires	luminaires	luminaires	luminaires
1.1ft	1300	1600	32	50	52	85
1.2ft/2.1ft						
1.5ft	3250	4000	10	16	16	26
1.4ft/2.2ft	2600		32	50	52	85
1.4ft/2.2ft	3200		10	16	16	26
2.4ft	5200	6400	10	16	16	26
2.5ft	6500	8000	10	16	16	26



The light source in this luminaire may be replaced only by the manufacturer or its contractual service technician or similarly qualified person!