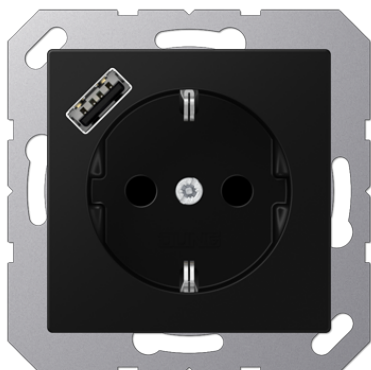


Product data sheet

SCHUKO® socket with USB charger



Reference number

A 1520-18 A SWM

SCHUKO® socket with USB charger

with enhanced contact protection / shutter (Safety Plus)
 with 1 USB port type A
 with quick charge function
 with screwless terminals for rigid and untreated flexible wires up to 2.5 mm²

Installation in flush box with dimensions according to DIN 49073
 depth of flush box (inner dimension): min. 57 mm

JUNG Quick Charge® supports these standards

Technical data

Rated voltage:	AC 220 ... 250 V ~
Mains frequency:	50/60 Hz
Rated current, socket:	16 A
Output voltage USB:	DC 9 V / DC 5 V
Output current USB:	2 A / 3 A
Stand-by power:	≤ 60 mW
Ambient temperature:	+5 ... +35 °C
Stora/transport temperature:	-20 ... +70 °C
Degree of protection:	IP 20
Connection mode:	screwless terminals
single wire:	1.5 ... 2.5 mm ²
stranded without ferrule:	1.5 ... 2.5 mm ²



matt lacquered

Colour:
 matt graphite black

Material:
 thermoplastic lacquered

P Colour printing possible