

# PORTALAMPADA PER LAMPADRE ALOGENE BASSA TENSIONE LAMPHOLDER FOR EXTRA-LOW VOLTAGE HALOGEN LAMPS

Multiattacco - Multiple cap



Norme di riferimento - Standard reference: EN 60238-1 / UL 496 - CSA C22.2

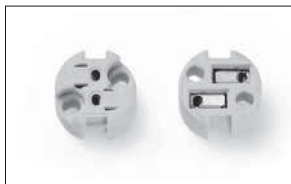
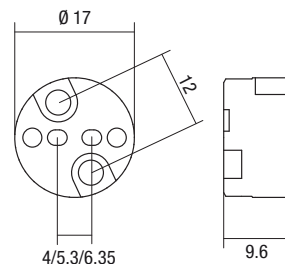


## 5023 G4 - GX5,3 - GY6,35 - 5A - 25V - T250 250V - 100W

Corpo in ceramica - Contatti in rame - Cavetti: silicone 0,75 mm<sup>2</sup> x 150mm (15/S) o 25cm teflon (25/T).

Ceramic body - Copper contacts - 0,75mm<sup>2</sup> x 150mm silicon wires (15/S) or teflon wires 25cm (25/T).

Articolo code	PCS	CCM cm <sup>3</sup>	Euro Cad.
709 15cm sil. B	500	2.000	8,00
5023/25/T B	1000	-	8,70

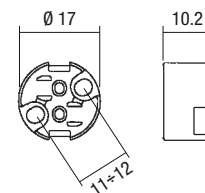


## 5031 G4 - GX5,3 - G6,35 - GY6,35 - 8A - 24V - T250

Corpo in steatite - Morsetti automatici - Contatti in bronzo nichelato - Fori fissaggio 3,3mm.

Steatite body - Push in terminals - Nickel bronze contacts - Fixing holes 3,3 mm.

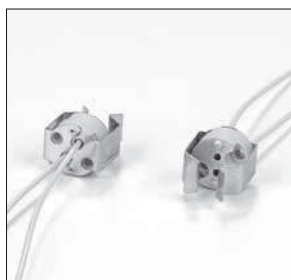
Articolo code	PCS	CCM cm <sup>3</sup>	Euro Cad.
5031/B	1000	3.971	4,40



GU5,3 - GU4



Norme di riferimento - Standard reference: EN 60238-1 / UL 496 - CSA C22.2

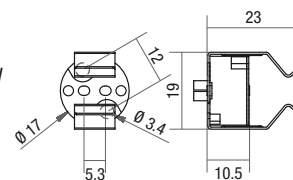


## 50GU53 GU5,3 - GU4 - 5A - 25V - T250 - 250W - 100W

Corpo in ceramica - Contatti in rame - Con cavi 15 cm in silicone 0,75 mm<sup>2</sup> (15/S) o 25 cm teflon (25/T) - Molla in acciaio.

Ceramic body - Copper contacts - 15 cm 0,75 mm<sup>2</sup> silicon wires (15/S) or 25 cm teflon (25/T) - Steel spring.

Articolo code	PCS	CCM cm <sup>3</sup>	Euro Cad.
709-PE 15 sil. B	500	-	10,80



# INTERRUTTORI E CABLAGGI SWITCHES AND CORDSET

Interruttori unipolare a pulsante  
Single pole press switches



Norme di riferimento - Standard reference: EN 61058-1 / UL 1054 - CSA C22.2

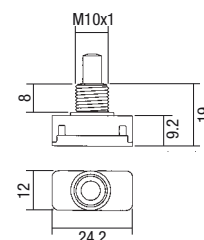


## 115N/T125 1[16]A - 250V - T125/55

Classe II - IP20 - Categoria D - PTI 250 - 1E4 - Contatti in bronzo - Morsetti automatici - Bottone bianco o nero - Grado inquinamento: normale - Modello /i con ranella.

Class II - IP20 - Category D - PTI 250 - 1E4 - Bronze contacts - Push in terminals - Black or white button - Pollution degree: normal - /i model with nut.

Articolo code	PCS	CCM cm <sup>3</sup>	Euro Cad.
115N/T125/BB B	3000	21.660	3,70



Collo 8mm - Neck 8mm

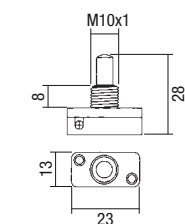


## 63 2[32]A - 250V - T55 UR: 2A - 125V - T65

Classe II - IP20 - Categoria D - PTI250 - 1E4 - Contatti in lega di ottone - Morsetti a vite - Bottone bianco - Grado inquinamento: normale - Modello /i con ranella.

Class II - IP20 - Category D - PTI250 - 1E4 - Brass alloy contacts - Screw terminals - White button - Pollution degree: normal - /i model with nut.

Articolo code	PCS	CCM cm <sup>3</sup>	Euro Cad.
63/BB B	3000	21.660	3,80



Collo 8mm / Neck 8mm