

The easy-to-install and secure locking clip for fixing of pipes



Plastic pipes



Plastic pipes

BUILDING MATERIALS

When using 2-component DUOPO-WER plug:

- Concrete
- Solid brick
- Solid sand-lime brick
- Aerated concrete
- Vertically perforated brick
- Perforated sand-lime brick
- Plasterboard
- Gypsum plasterboard and gypsum fibreboards
- Hollow blocks made from lightweight concrete
- Cavity floor slabs made from bricks and concrete or similar
- Natural stone
- Chipboard
- Solid panel made from gypsum
- Solid brick made from lightweight concrete

CHARACTERISTICS



ADVANTAGES

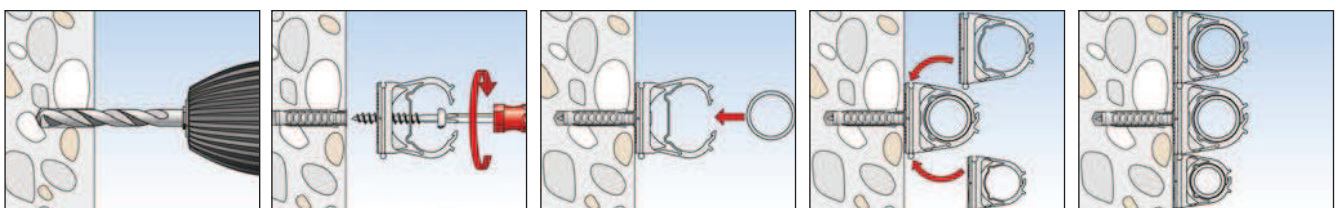
- When pressing, the locking clip SCN automatically embraces and locks the pipe, thus enabling convenient installation.
- The mechanical lock provides a secure and reopenable fixing.
- The integrated slotted hole allows for an easy and adjustable installation.
- The double-sided couplings allow several clips to be coupled together. This saves installation time and money.
- Flexible mounting with plugs and screws or with 11 mm C-profile rails.
- The durable nylon material is halogen- and silicone-free, allows year-round use even under frost and thus ensures a high level of safety.

APPLICATIONS

- Plastic, empty pipes
- Flexible and rigid electric tubes
- Aluminium-, copper- and steel pipes

FUNCTIONING

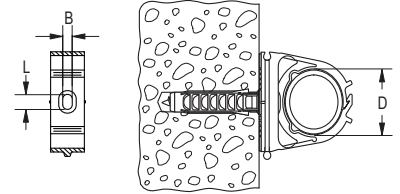
- The locking clip SCN is fixed in pre-positioned installation with a suitable plug and screw or in 11 mm C-profile rails.
- Due to the mechanical locking, the pipes are securely fixed with the clip.
- Installation temperature -20 °C + 60 °C
- Temperature resistance when installed -40 °C to +80 °C.



TECHNICAL DATA



Locking clip **SCN**



Item	Art.-No.	Pipe to wall distance	Clamping range	Dimension of slot	Sales unit			
		[mm]	D [mm]	B x L [mm]	[pcs]			
SCN 16	501261	11	16	4,5 x 4,5	100			
SCN 20	501262	11	20	4,5 x 6,5	100			
SCN 25	501263	11	25	4,5 x 6,5	50			
SCN 32	501264	13	32	4,5 x 7,5	50			
SCN 40	501265	13	40	4,5 x 7,5	25			
SCN 50	501266	14	50	4,5 x 7,5	25			