

# Line-Interactive / VFD Office-Home series

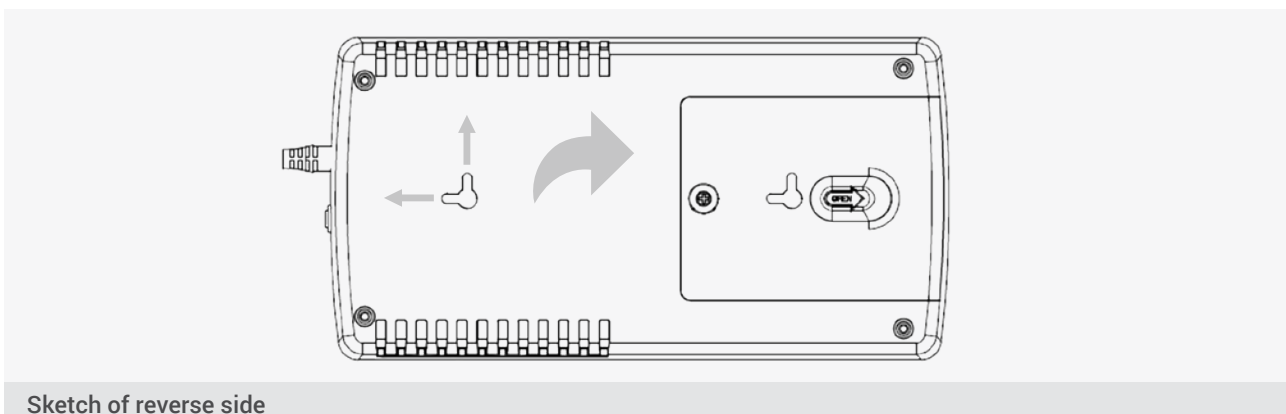
**NEW**

The OFFICE Home range made by EFFEKTA® protects your office equipment, such as PCs and their peripherals, from mains power failures. The compact dimensions of this UPS unit enable the UPS system to be incorporated elegantly in the most confined of spaces.

Another special feature of this UPS is its integrated multiple-function connector strip. It features 3 isolated ground receptacles with a UPS function and 3 isolated ground receptacles for overvoltage protection. All relevant information is displayed on a backlit LCD display with touchscreen.



## ■ Details



## ■ Characteristics

- UPS classification VFD-SY-333 (IEC 62040-3)
- Offline-technology
- Compact design
- Output modified sine wave
- Cold start function (starting in battery mode)
- Automatic reboot when power supply is restored
- Microprocessor control
- Automatic frequency detection
- Simple battery replacement
- USB interface as standard
- Management software
- 12 months warranty

## ■ Special features

- LCD display with touchscreen
- Exceptionally compact design
- Suitable for wall mounting
- Multiple-function connector strip
- Programmable self-test, battery test
- Off-mode charging

## ■ Specifications

Office Home		
<b>Power</b>	Power in VA	800
	Power in W	480
<b>Autonomy time</b>	PC load	15
<b>Technology</b>	Offline	VFD-SY-333 in accordance with IEC 62040-3
<b>Phase</b>	Input / Output	1-phase / 1-phase
<b>Input</b>	Nominal input voltage	230 VAC
	Input voltage range	180-270 VAC
	Input frequency range	50/60 Hz (Auto-Sensing)
<b>Output</b>	Output voltage	230 VAC
	Voltage Regulation	±10%
	Frequency Range	50 Hz oder 60 Hz ± 1 Hz
	Transfer time	2-6 ms typical / 10 ms max.
<b>Battery</b>	Voltage form	Modified sine wave
	Type	Maintenance free lead-acid battery
	Life time	5 years
	Charging current (max)	0,5 A
<b>Communication</b>	Recharging time	ca. 8 h / 90% capacity
	Interface	USB
<b>Dimensions / Weight</b>	Display	LC-Display
	Dimensions (H x W x D in mm)	95 x 158,5 x 305
	Weight	2,9 kg
<b>Terminals</b>	Protection	IP 20
	Input	Mains power cable with isolated ground two-pin grounded connector
	Output	3 x isolated ground receptacles with UPS protection / 3 x isolated ground receptacles with overvoltage protection
<b>Environmental conditions</b>	Temperature	0°C – 40°C, 20°C recommended
	Humidity	0-90 % RH @ 0- 40°C (non condensing)
	Acoustic Noise	Normal mode nearly noiseless <40 dB
<b>Safety / Enclosure</b>	Safety	EN 62040-1
	EMC	EN 62040-2, class C2
	Certifications	CE