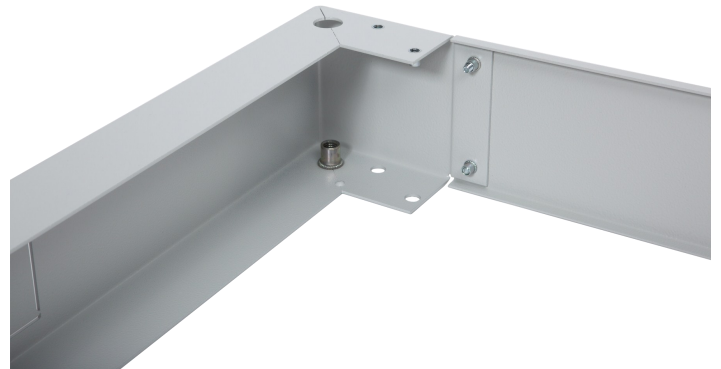
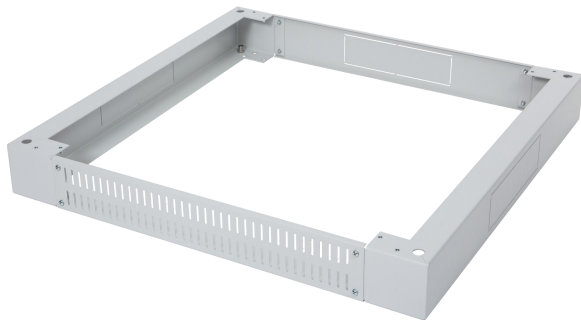


Product Information

Base, BKT 19", 800/1000/100 W/D/H mm. RAL 7035 grey

Card No. PI_11070810.1_02.16



Features

- For mounting with distribution and SRS cabinets
- Rear cover and side units with wide holes (250 x 70 mm) allowing easy routing of cable bundles (base equipped with one brush grommet)
- Front perforated cover
- Possibility of using floor - leveller feet (included in delivery)
- Material: steel sheet
- Load: 1000 kg
- Colour: RAL 7035

Performance/Variants

| Width (mm) | Depth (mm) | Height (mm) | Index |
|------------|------------|-------------|------------|
| 800 | 1000 | 100 | 11070810.1 |