

Mounting box

MNT-02

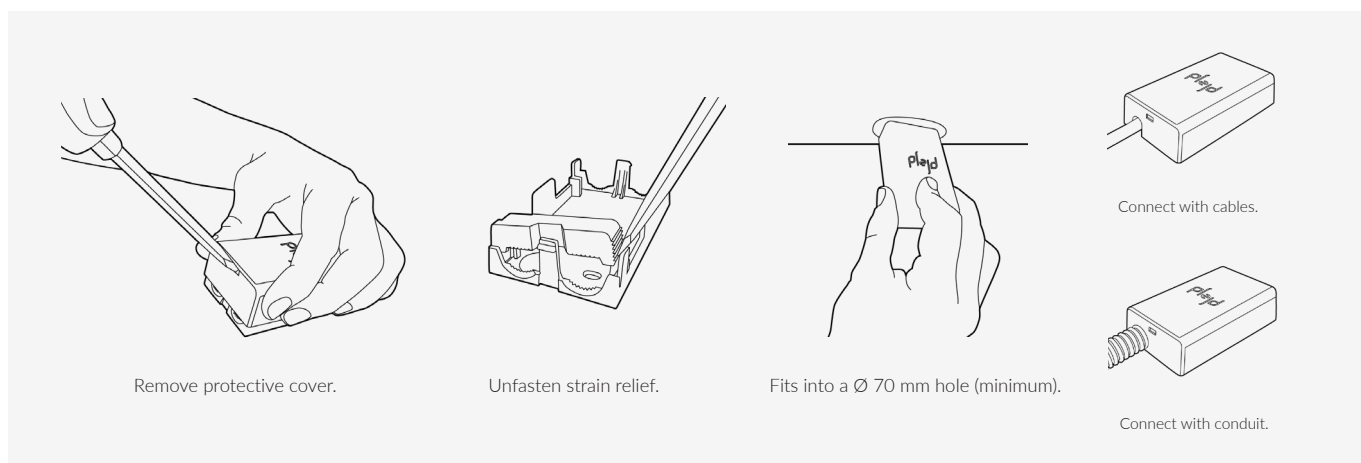


Mounting box for non-contact installation of Plejd pucks on a wall, in a recess, or in a cabinet.

- Cable connection with strain relief.
- Connection with Ø 16 mm conduit.
- Knockouts through bottom and both short sides for the connections.
- Dimensions 93x53x25 mm.
- IP20

Compatible with:

- | | |
|------------------|-----------|
| Dimmer LED | DIM-01 |
| 2-channel dimmer | DIM-02 |
| Dimmer 1-10 V | CTR-01 |
| 2-channel relay | REL-02 |
| LED driver 10 W | LED-10 |
| Relay 16 A | REL-01-2P |
| Dimmer 2-pole | DIM-01-2P |
| DALI Broadcast | DAL-01 |



Remove protective cover.

Unfasten strain relief.

Fits into a Ø 70 mm hole (minimum).

Connect with cables.

Connect with conduit.

DIMENSIONS

93x53x25 mm
Ø 16 mm conduit

IP CLASS

IP20