



GWY-01
INSTALLATION MANUAL

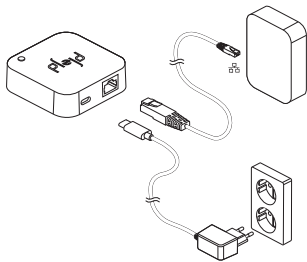


GATEWAY

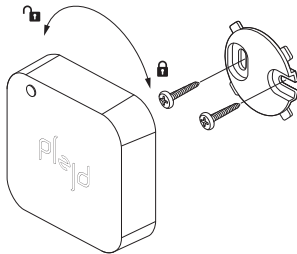
Further information can be found
in the Plejd app or at [plejd.com](https://www.plejd.com)

1 Connect the product

Gateway connects to your local network via Ethernet and communicates wirelessly with your Plejd products. Place Gateway within clear range of your Plejd system, not in a closed metal cabinet.



The product can also be mounted in place with the accompanying wall bracket. A network cable and a power adapter are supplied in the box. Screws for the wall bracket are not included.



2 Download the app and follow the instructions

Download the Plejd app on the App Store or Google Play. Open the app and follow the instructions to add Gateway to your Plejd system.

Setup requires an Internet connection on your phone or tablet. With the app you can communicate directly to the unit via Internet and Bluetooth®.

Power adapter (supplied*)

100–230 V ~50/60 Hz 0.2 A

Output voltage: +5V DC 1 A

USB-C

*Supplied with DVE Switching Adapter, model no.
DSA-6PFG-05 FEU. Use only adapter listed.

Power consumption

0.6 W

External operating temperature

0 to +35 °C

Dimensions

70x70x20 mm

LAN connection

Ethernet/RJ45

Radio

2.4 GHz mesh

Bluetooth®

Radio range

Up to 10 m indoors.

The Plejd mesh technology extends the range by
allowing the units to communicate with each other.

Support

In the event of any technical questions, please contact Plejd customer service.

E-mail: support@plejd.com | Phone: +46 (0) 10 203 89 91

Compliant to standards

Hereby, Plejd AB declares that the radio equipment type GWY-01 is in compliance with Directive 2014/53/EU.

The full text of the EU declaration of conformity is available at the following internet address:
plejd.com



Plejd AB

Kroksläatts fabriker 27A
431 37 Mölndal
Sweden

Manufacturer | Plejd AB
Country of manufacture | Sweden