

Mains electricity

230 VAC/50 Hz, max 0.05 A

Standby power

0.4 W

External operating temperature

-25 to +35 °C

Dimensions

46x46x18 mm

Protection

Overtemperature software
Short circuit protection

DALI bus

Max 64 DALI loads
Guaranteed supply current 128 mA
Maximum supply current 150 mA
Max cable length 300 m (1.5 mm²)
Basic insulation

Radio

2.4 GHz mesh
Bluetooth®
<10 dBm

Radio range

Approx. 10 m indoors

The Plejd mesh technology extends the range by allowing the units to communicate with each other

RISK OF INJURY TO PERSON OR PROPERTY

All work on the appliance must be carried out by an authorized electrician. National laws and regulations must be followed.

Plejd AB

Krokslätts Fabriker 27A
431 37 Mölndal, Sweden

Compliant to standards

Hereby, Plejd AB declares that the radio equipment type DAL-01 is in compliance with Directive 2014/53/EU.

The full text of the EU declaration of conformity is available at the following internet address: plejd.com/compliance



Plejd

DAL-01

INSTALLATION MANUAL



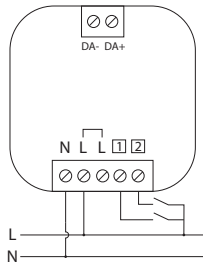
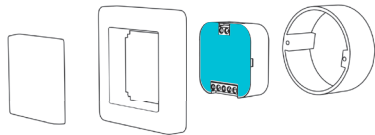
Further information can be found in the Plejd app or at plejd.com

1 Connect the product

Install the product in the appliance box behind the push button/box lid or secure it with a Mounting clip (MNT-01, not included) on the wall or DIN rail.

Connect the product according to the wiring diagram. DAL-01 comes with a built-in power supply, so there is no need to use a dedicated DALI power supply for the DALI bus.

The short circuit protection activates after 2 seconds, and recovers after 13 seconds.



Control inputs 1 2

Control inputs 1 and 2 can be used for control with:

- push button (preset)
- light switch
- motion sensor (with neutral conductor).


The inputs can also be used to wirelessly control one or more products from Plejd. Additionally, double click on a push button can be used to activate scenes.


2 Follow the instructions in the app

Download the Plejd app on the App Store or Google Play.

After supplying power to the unit by following the wiring diagram, use the app to complete the installation. Setup requires Bluetooth® and an internet connection. You do not need any additional equipment to get started. Use the app to easily configure all settings.

3 Hand over the Plejd system

Hand over the Plejd system to your customer by writing the system code on the included sticker . You will find the code in the app once you have completed the installation.

Place the sticker in the distribution box and give the welcome folder  to the customer.

Support

In the event of any technical questions, please contact our customer service: support@plejd.com | +46 (0) 10 203 89 91